

GREEN TERRACE 2ª FASE

BLOCO C3

PERTO DO CENTRO, PERTO DA NATUREZA.



PROJETO GRUPO ACRESCENTAR



"Perto do centro, perto da natureza."

Na sequência de um projecto urbanístico de excelência, a segunda fase do Green Terrace, destaca-se pelos amplos espaços verdes, pela sustentabilidade nos métodos construtivos, e pela primazia dada a ruas amplas com jardins.

O Green Terrace (2ª fase) situa-se junto ao estádio do S.C.Braga, uma localização privilegiada que permite a interligação de dois mundos: por uma lado morar perto do centro da cidade e, por outro lado, a qualidade de vida e bem-estar que o local apresenta. Poderá assim, usufruir de natureza e tranquilidade a apenas dois quilómetros do centro da cidade.

TIPOLOGIA T0

2 apartamentos

TIPOLOGIA T1

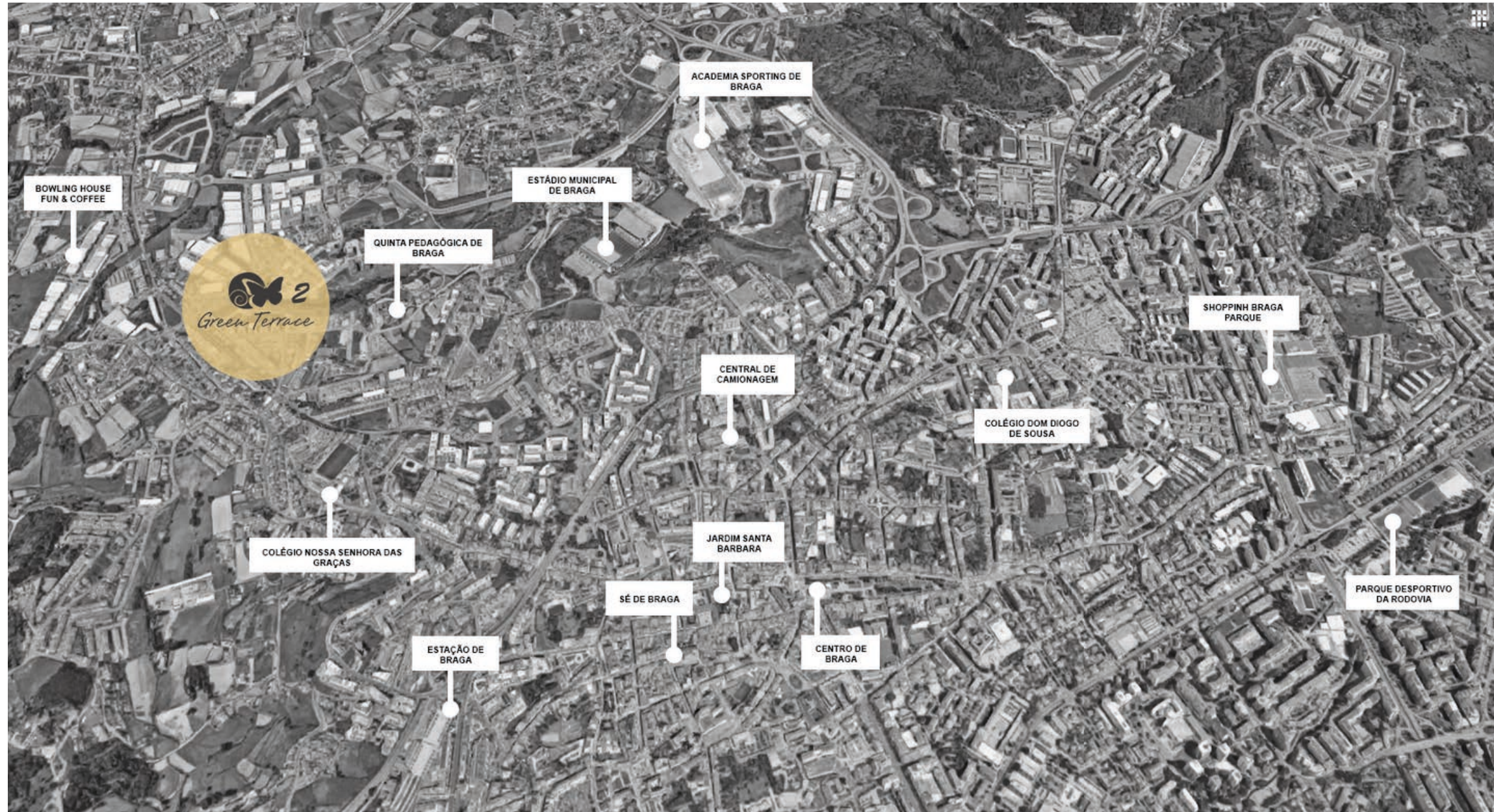
4 apartamentos
(2 em cobertura)

TIPOLOGIA T2

22 apartamentos
(2 em cobertura)

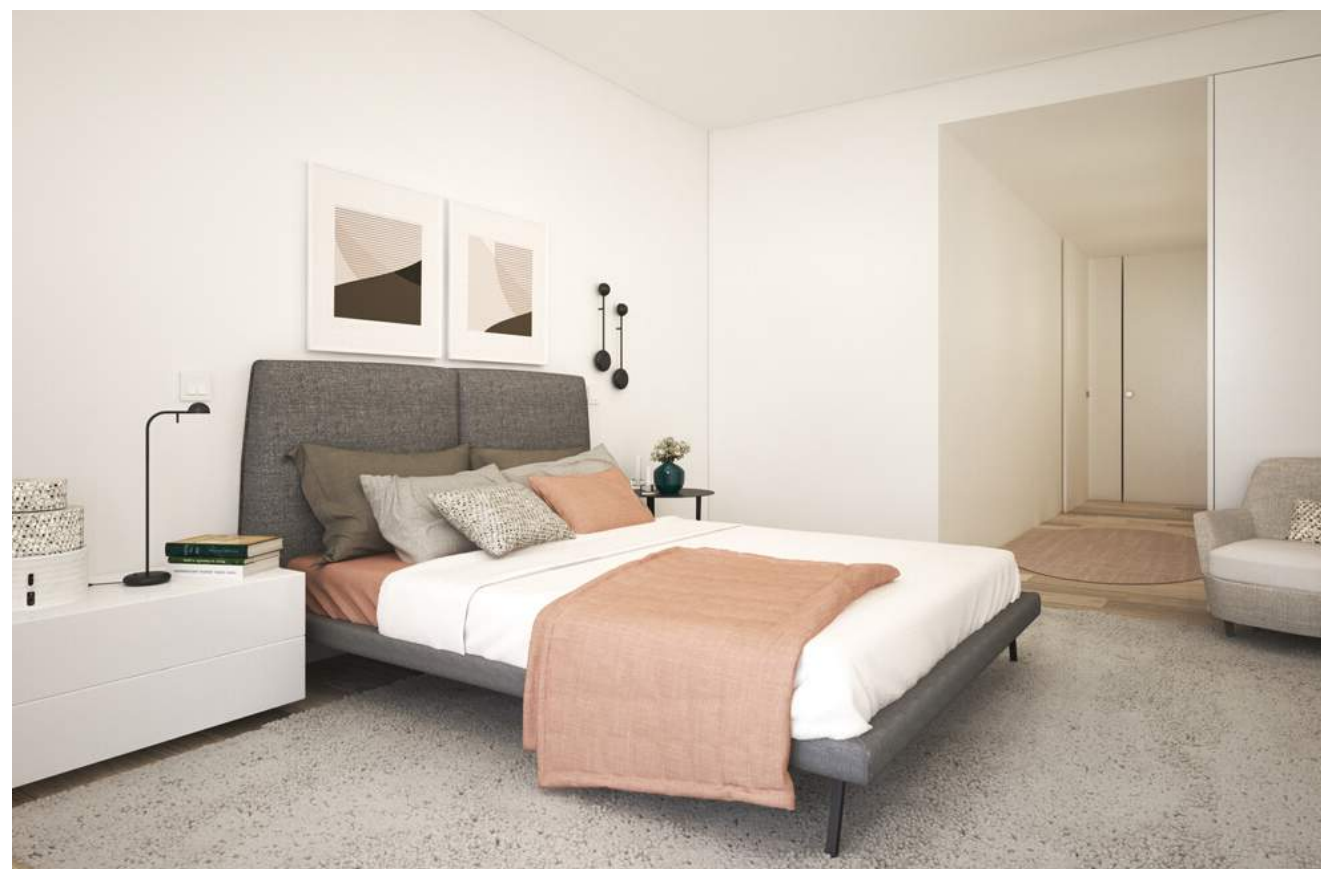
TIPOLOGIA T3

22 apartamentos
(4 em cobertura)



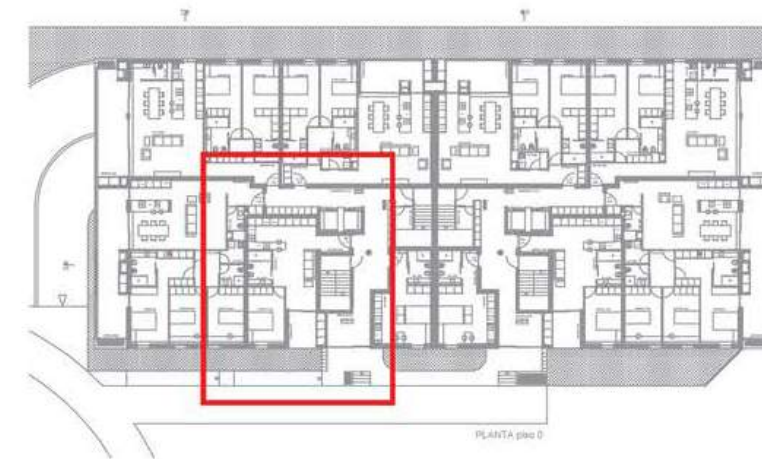
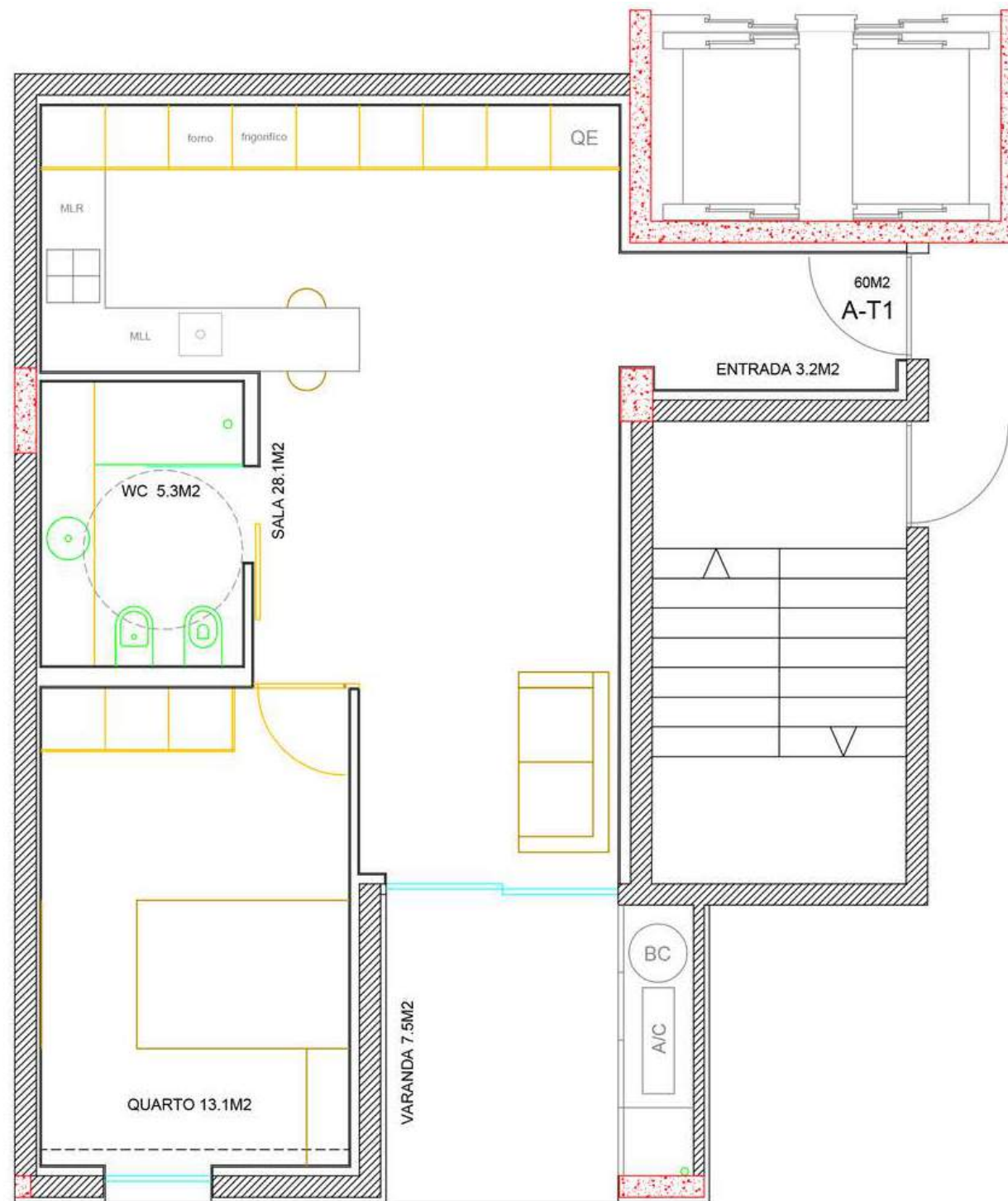


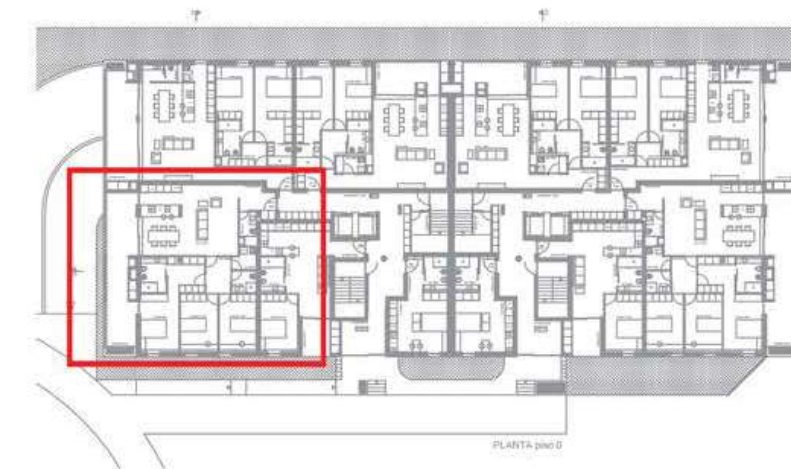
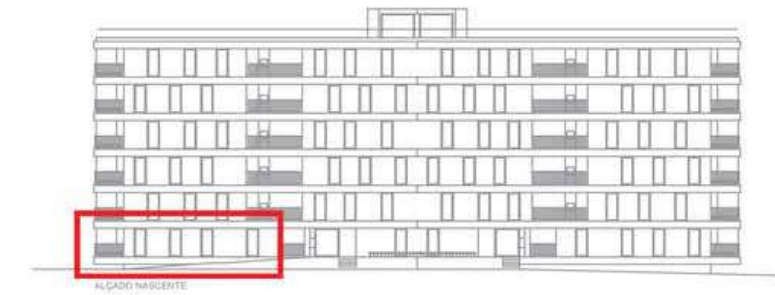
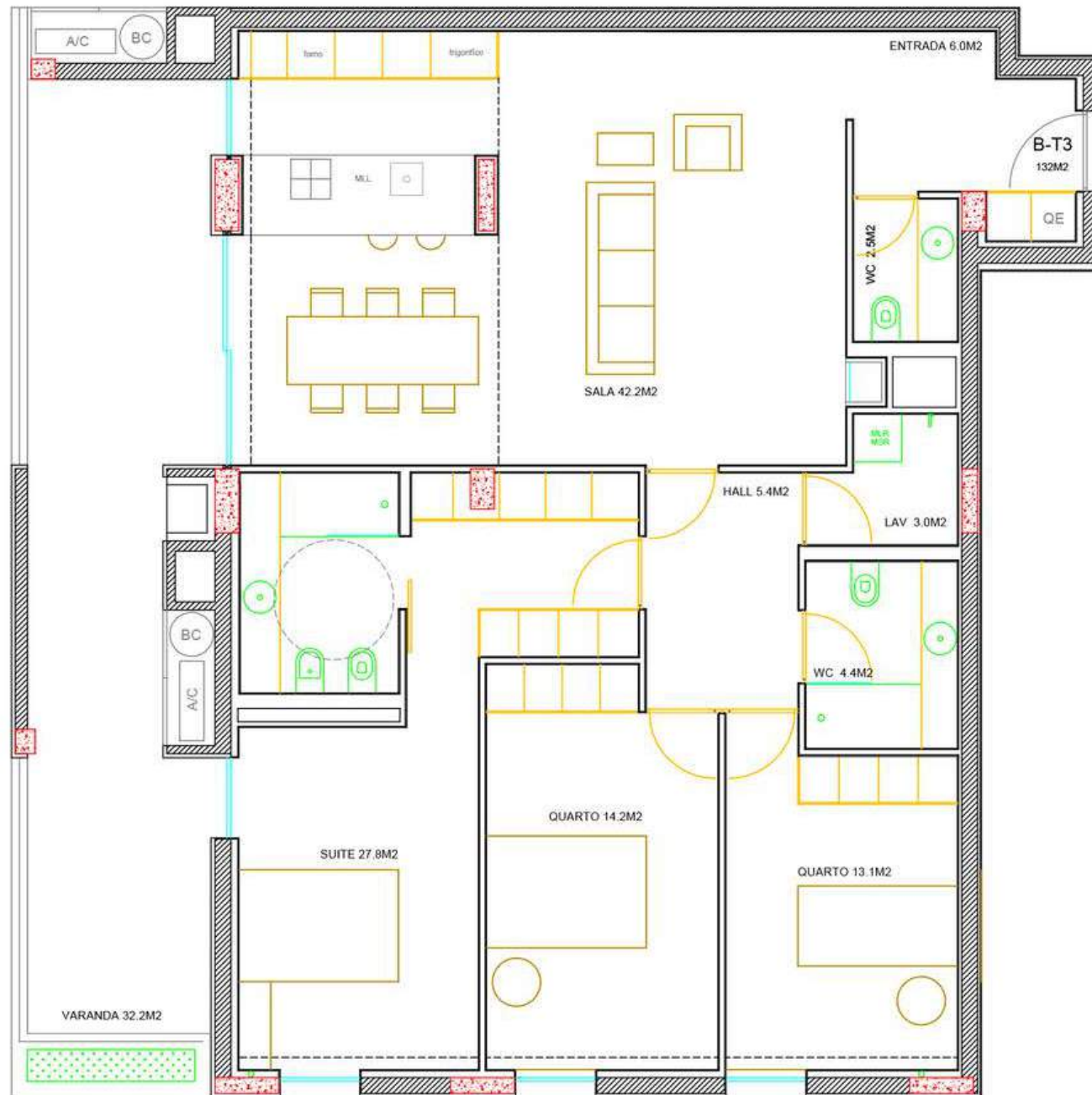


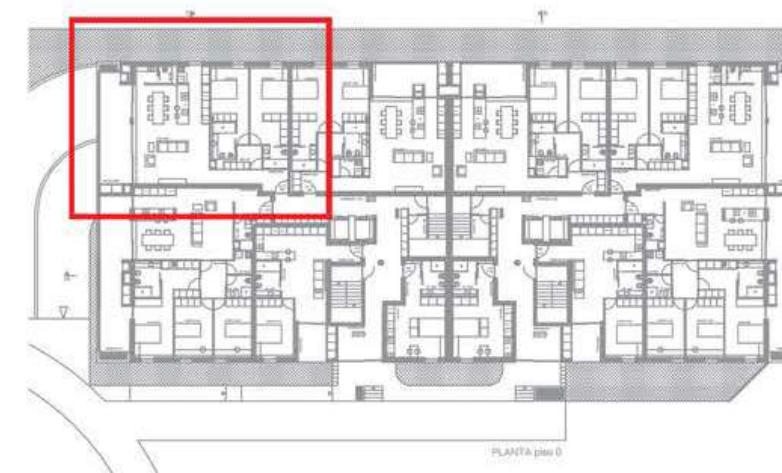
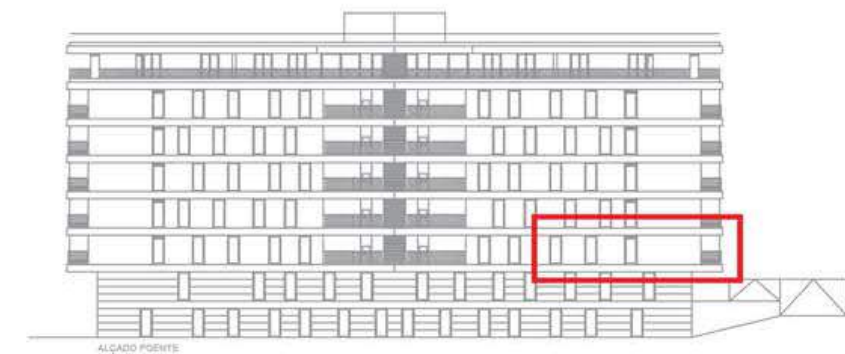


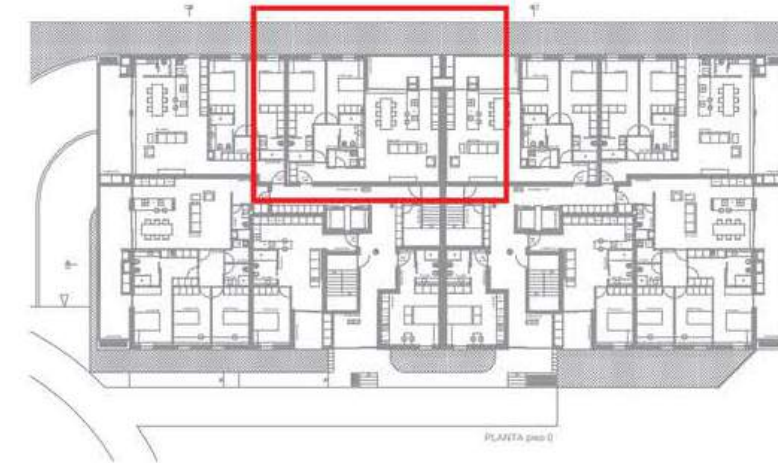
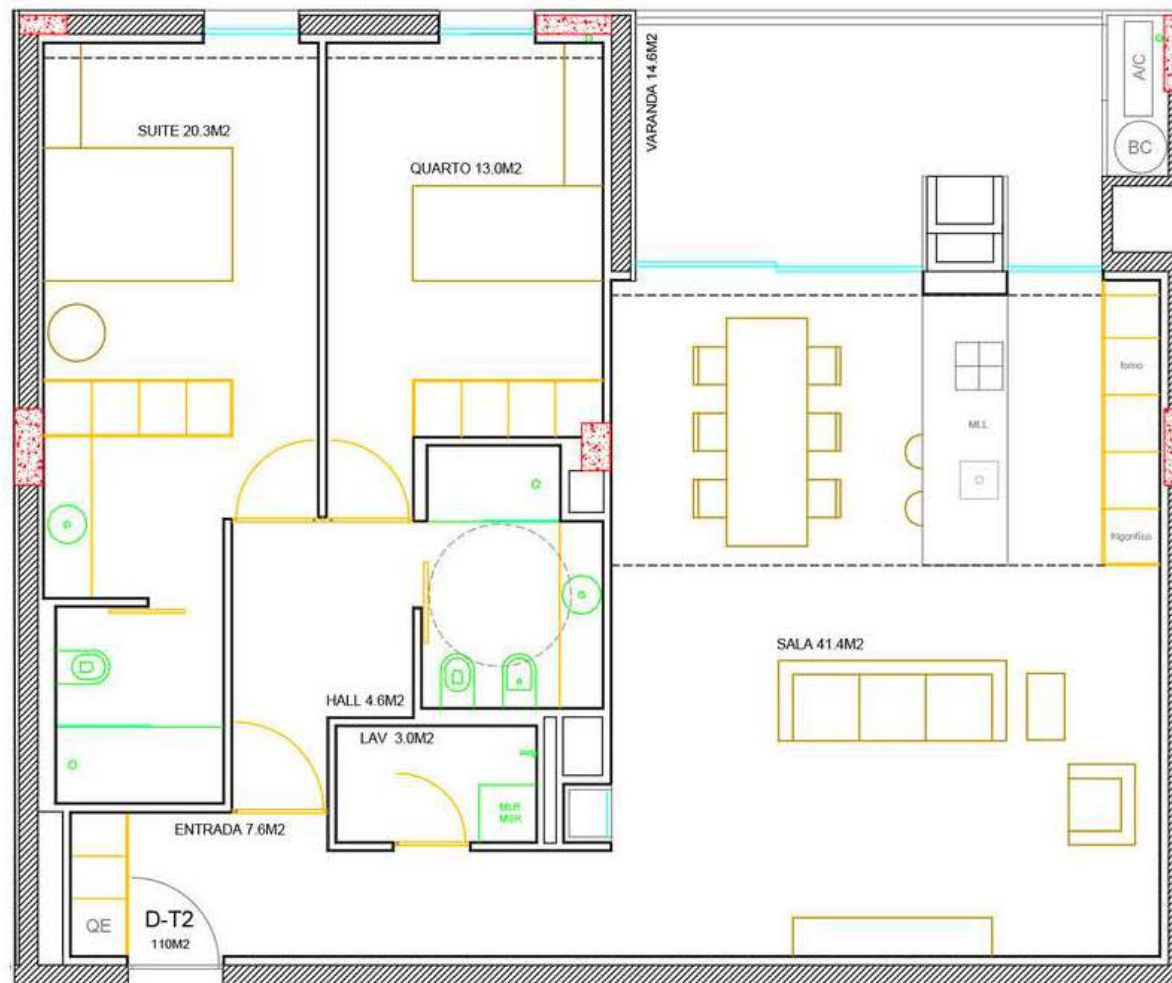


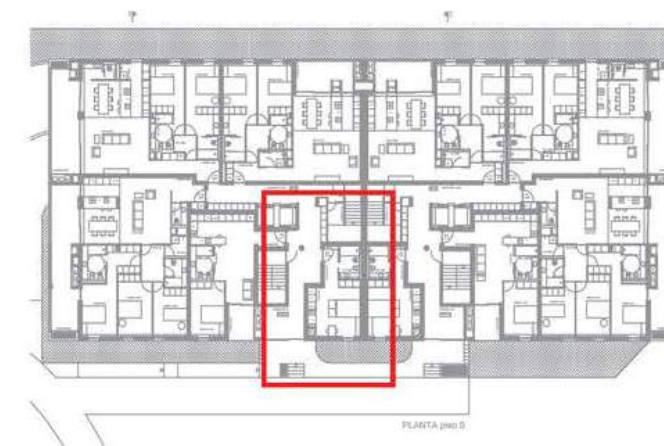
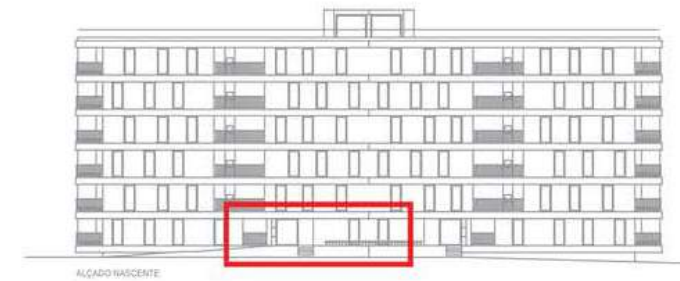
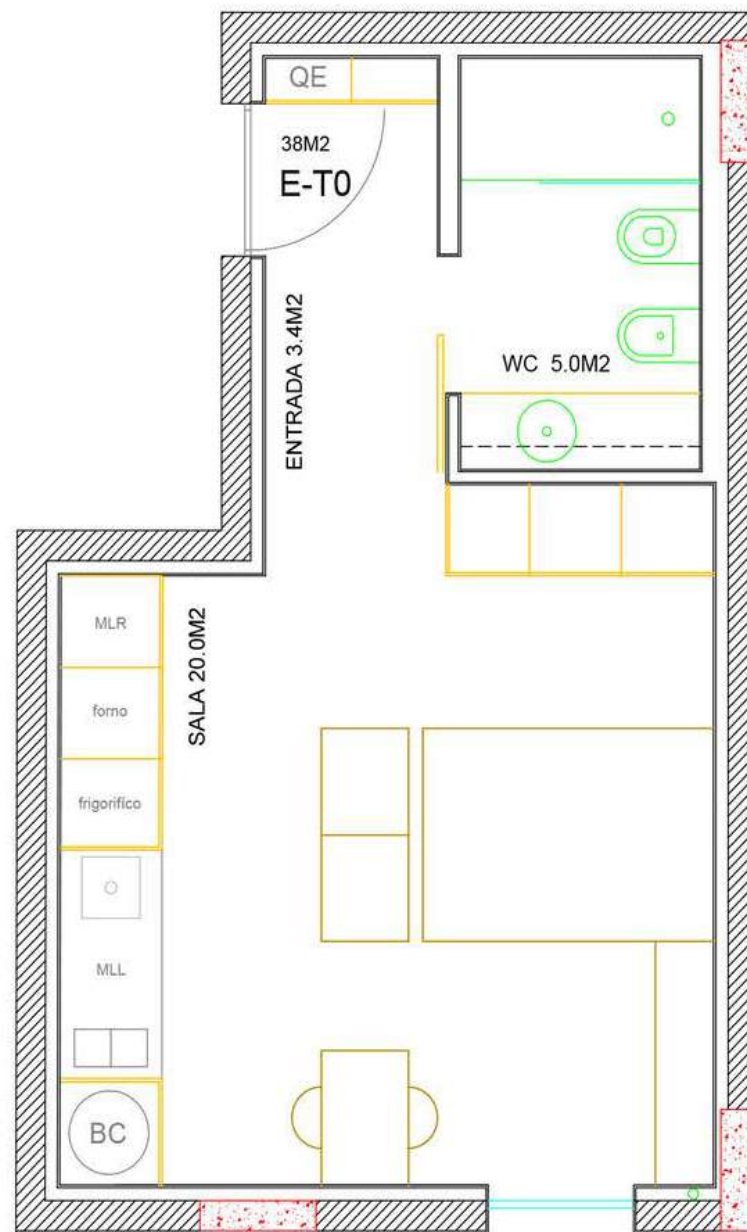


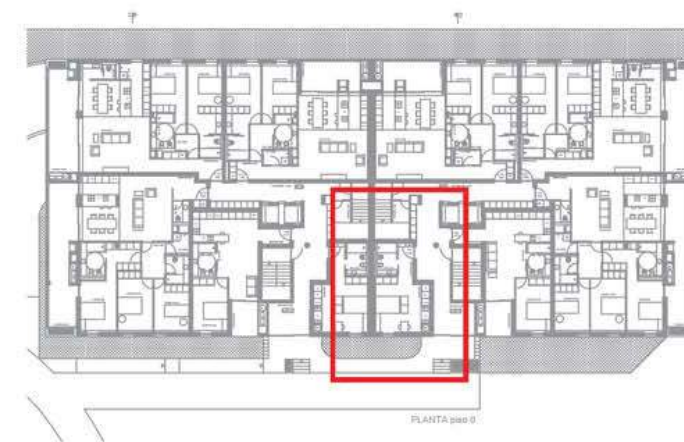
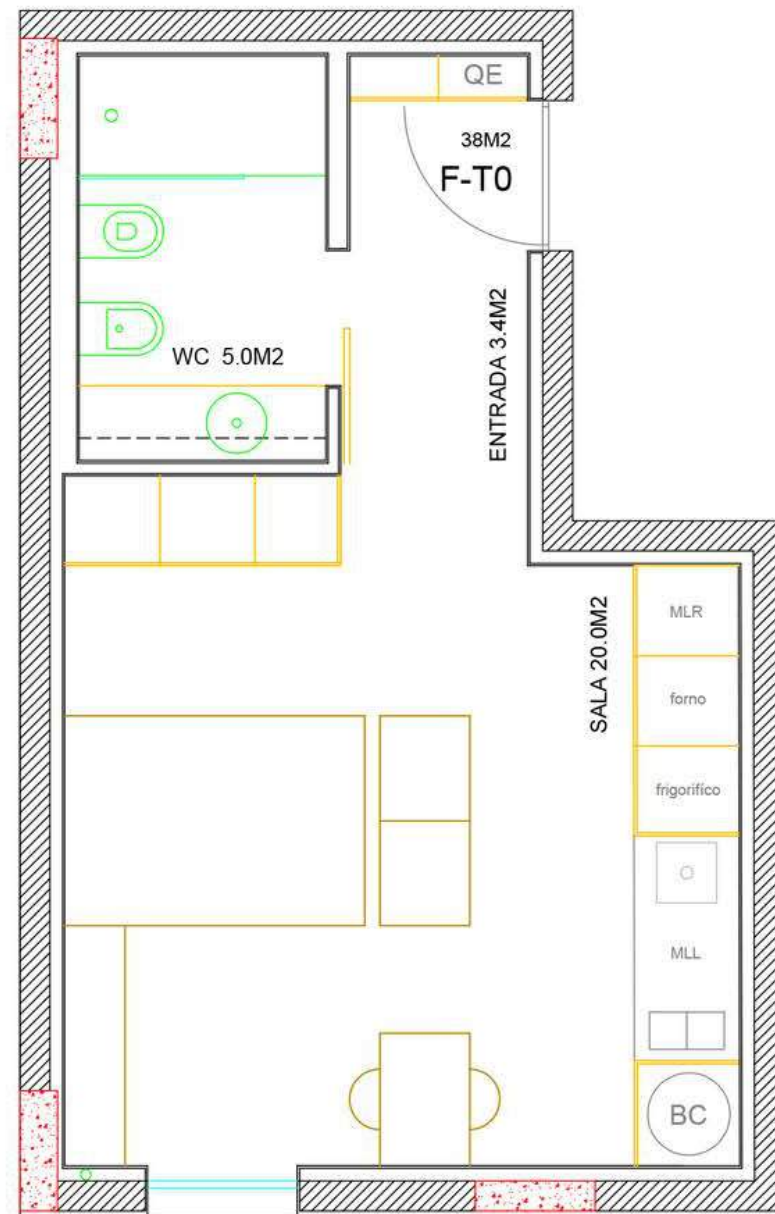


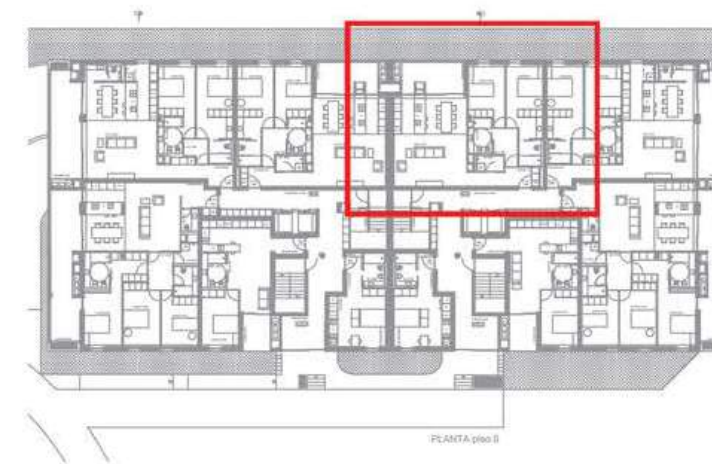
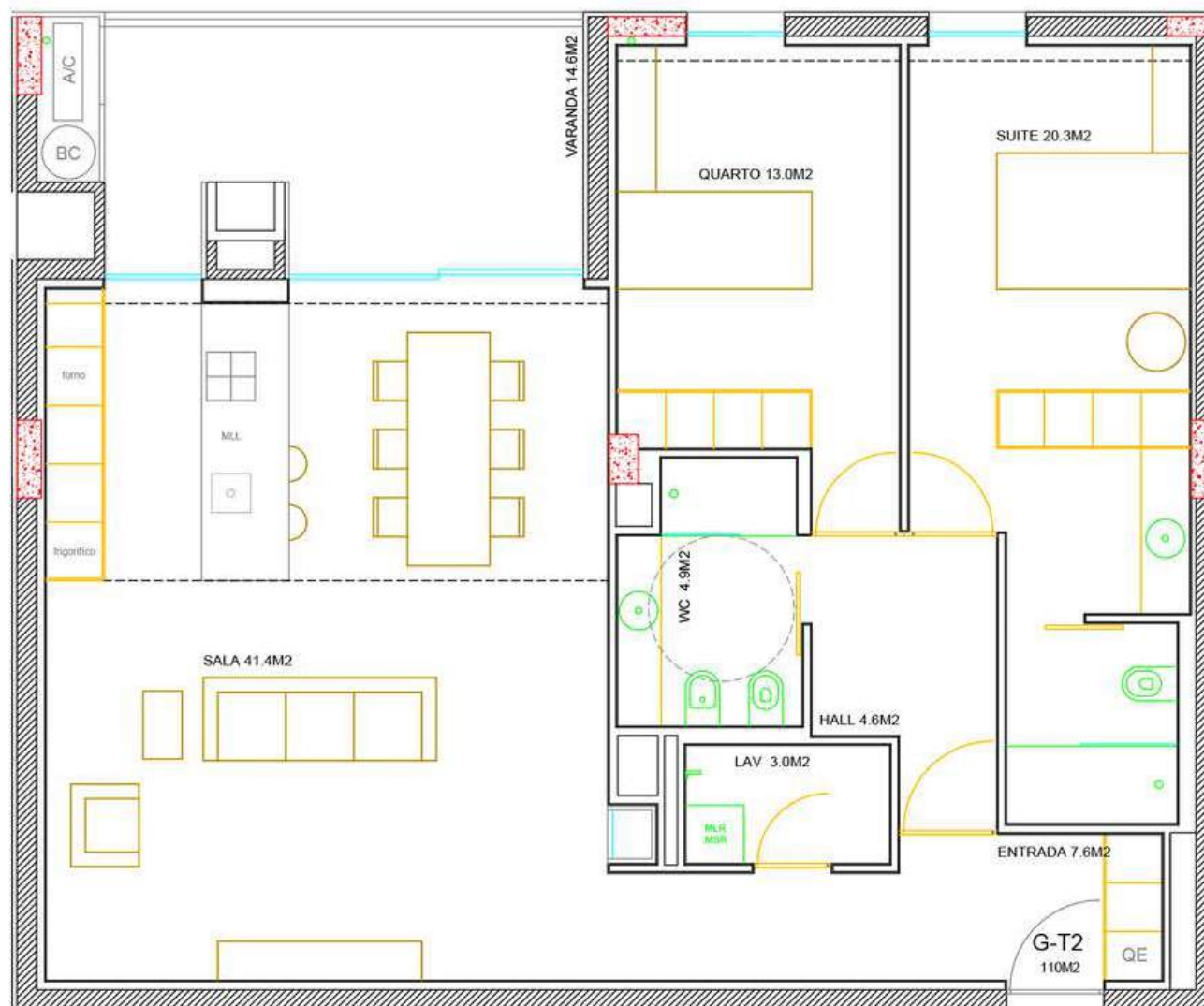


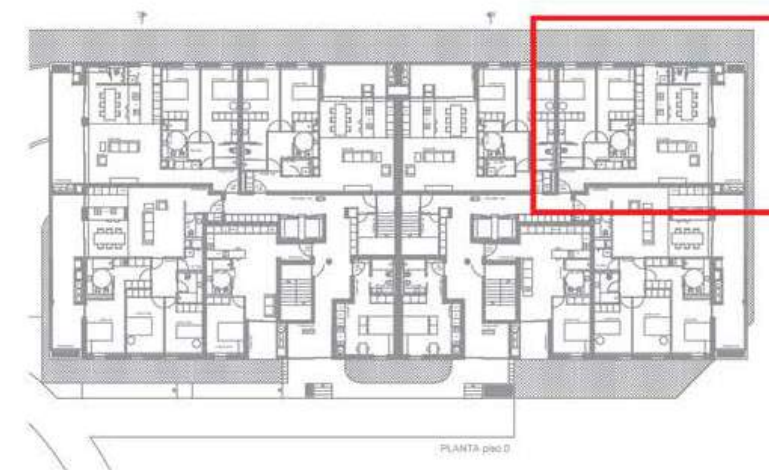
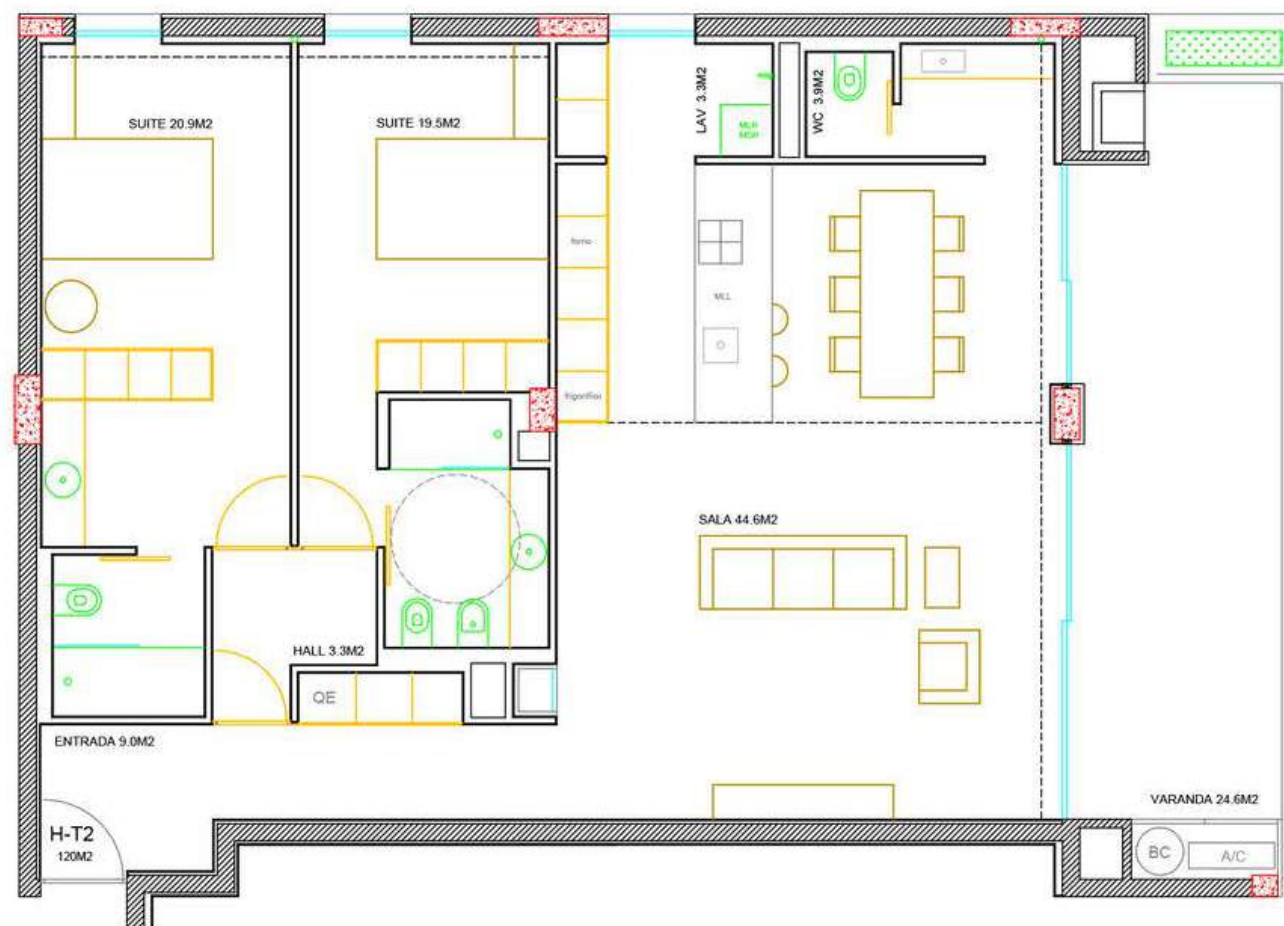


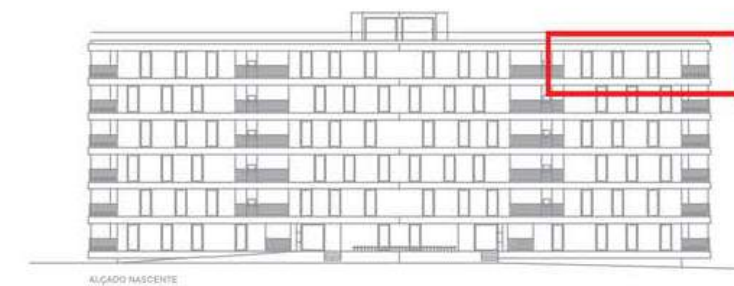
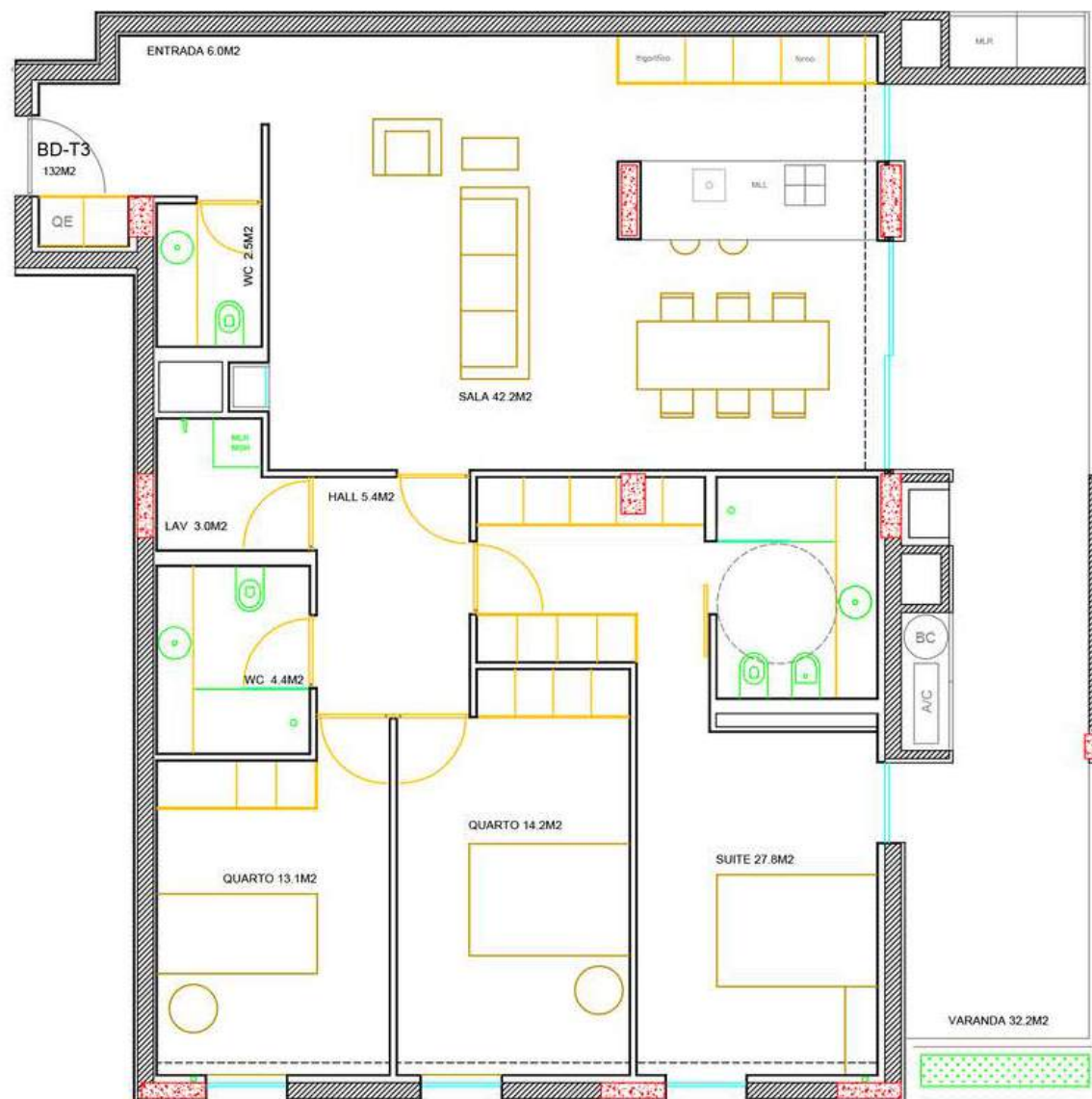


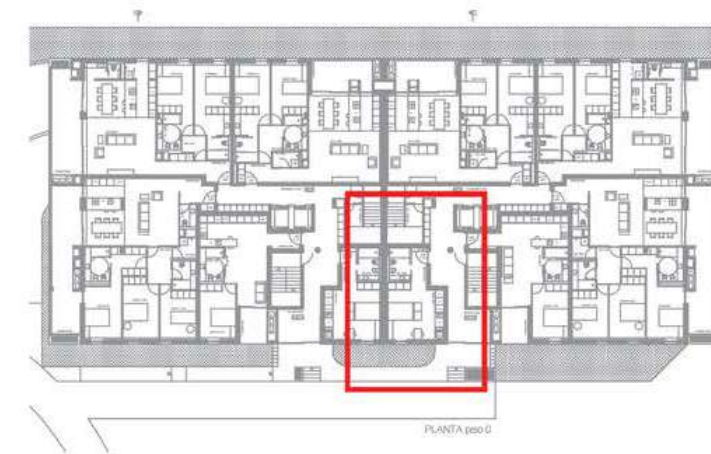
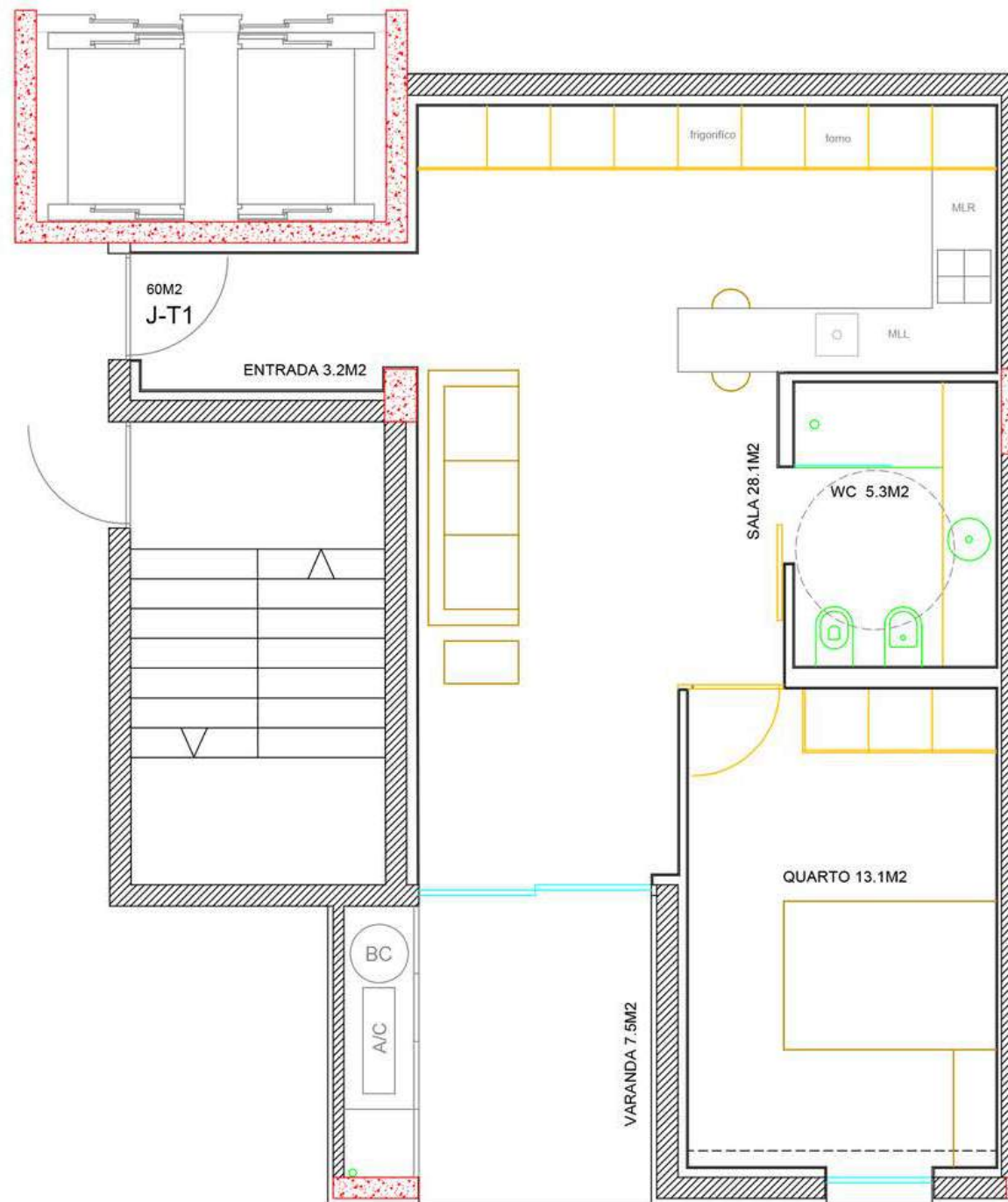






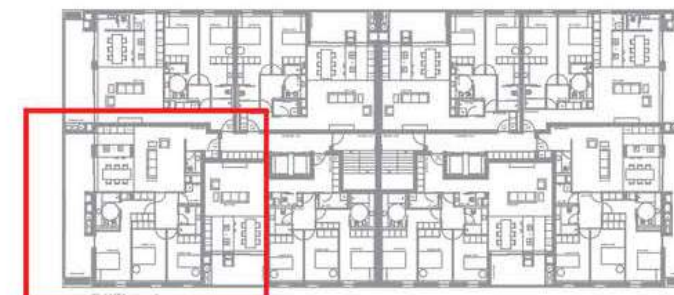
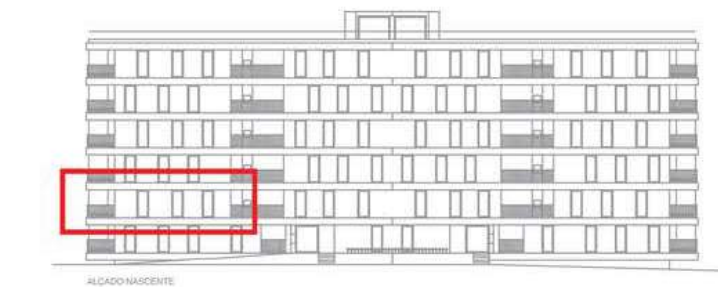
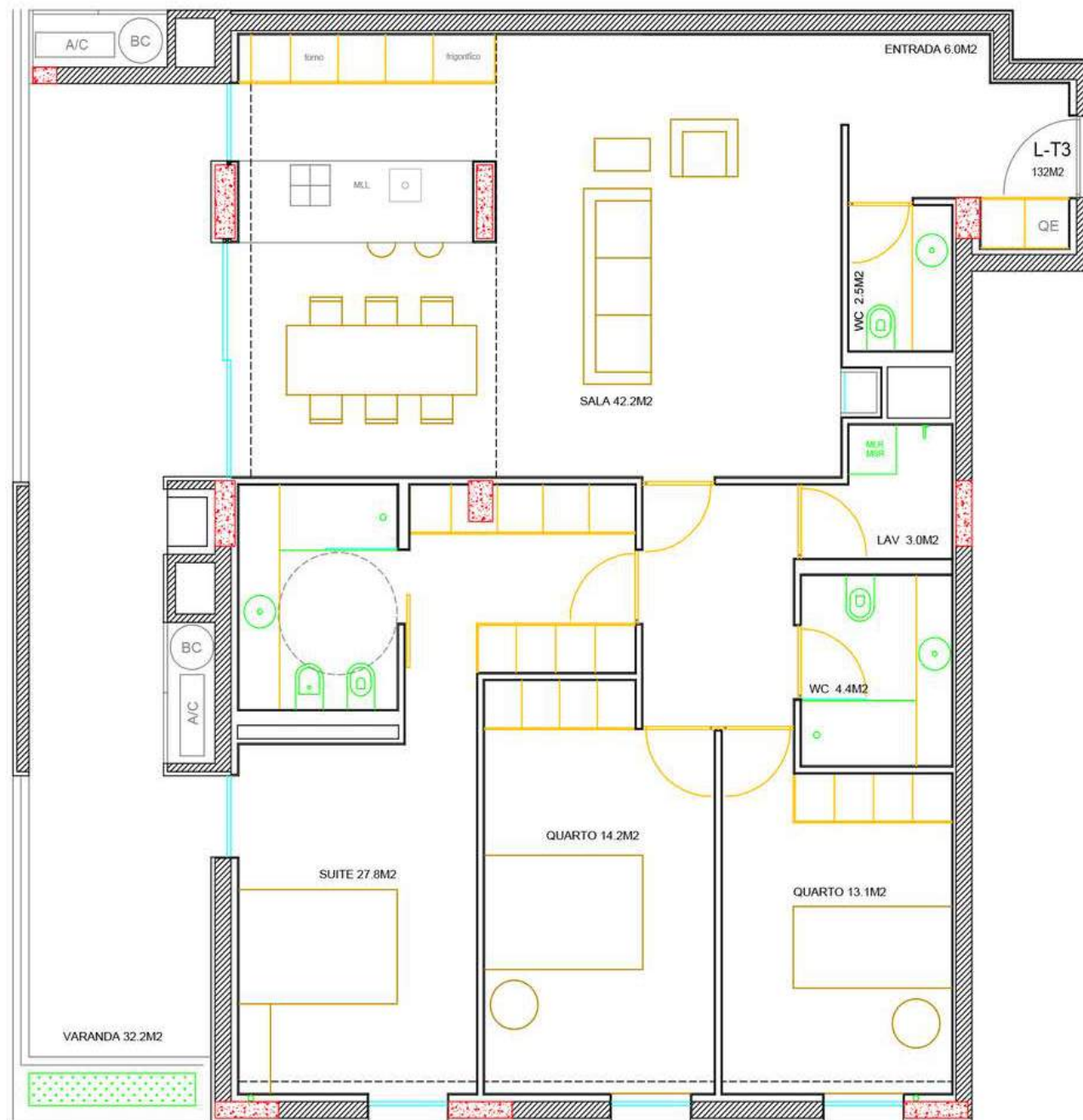


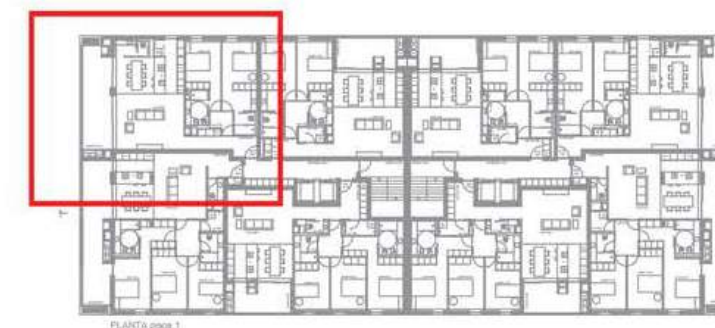
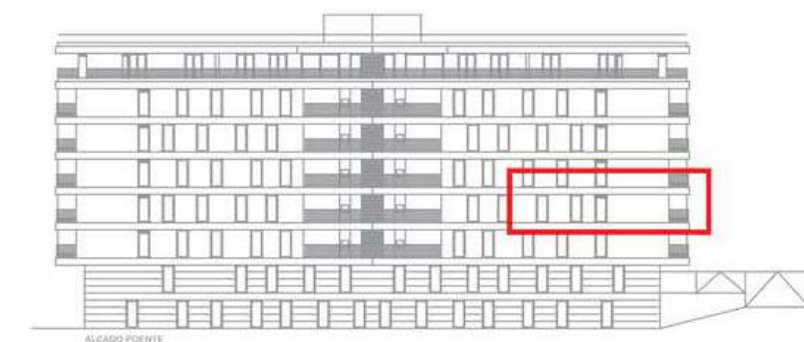


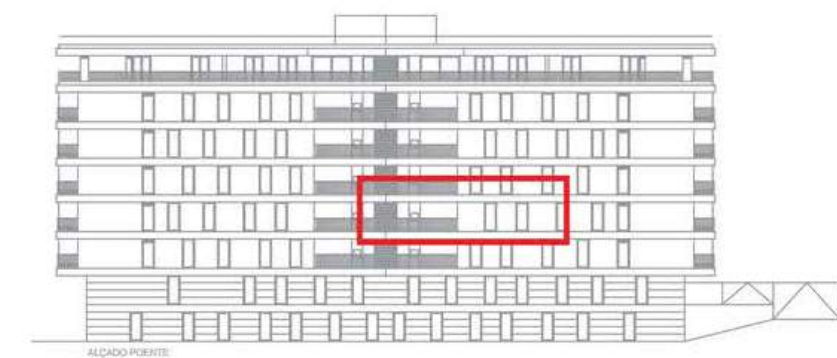
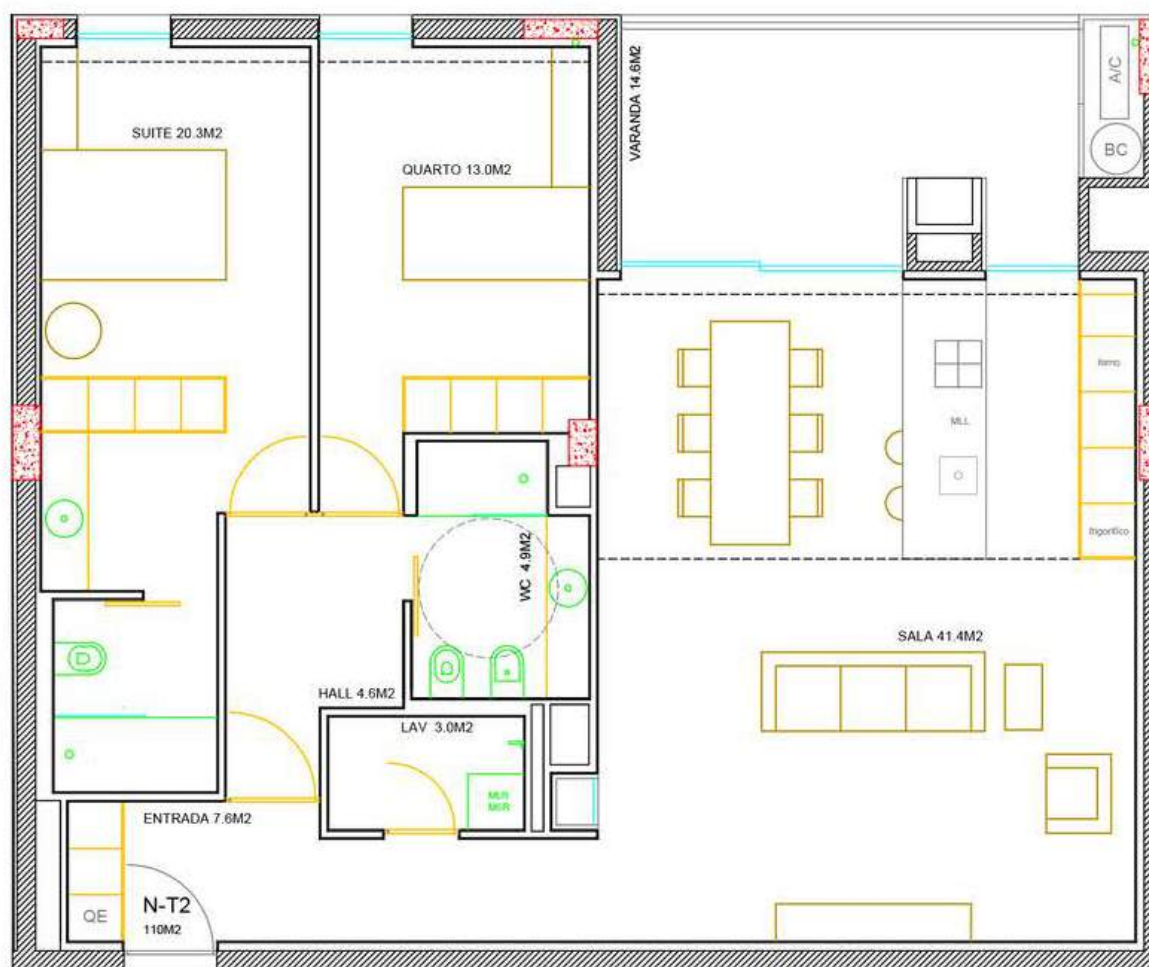


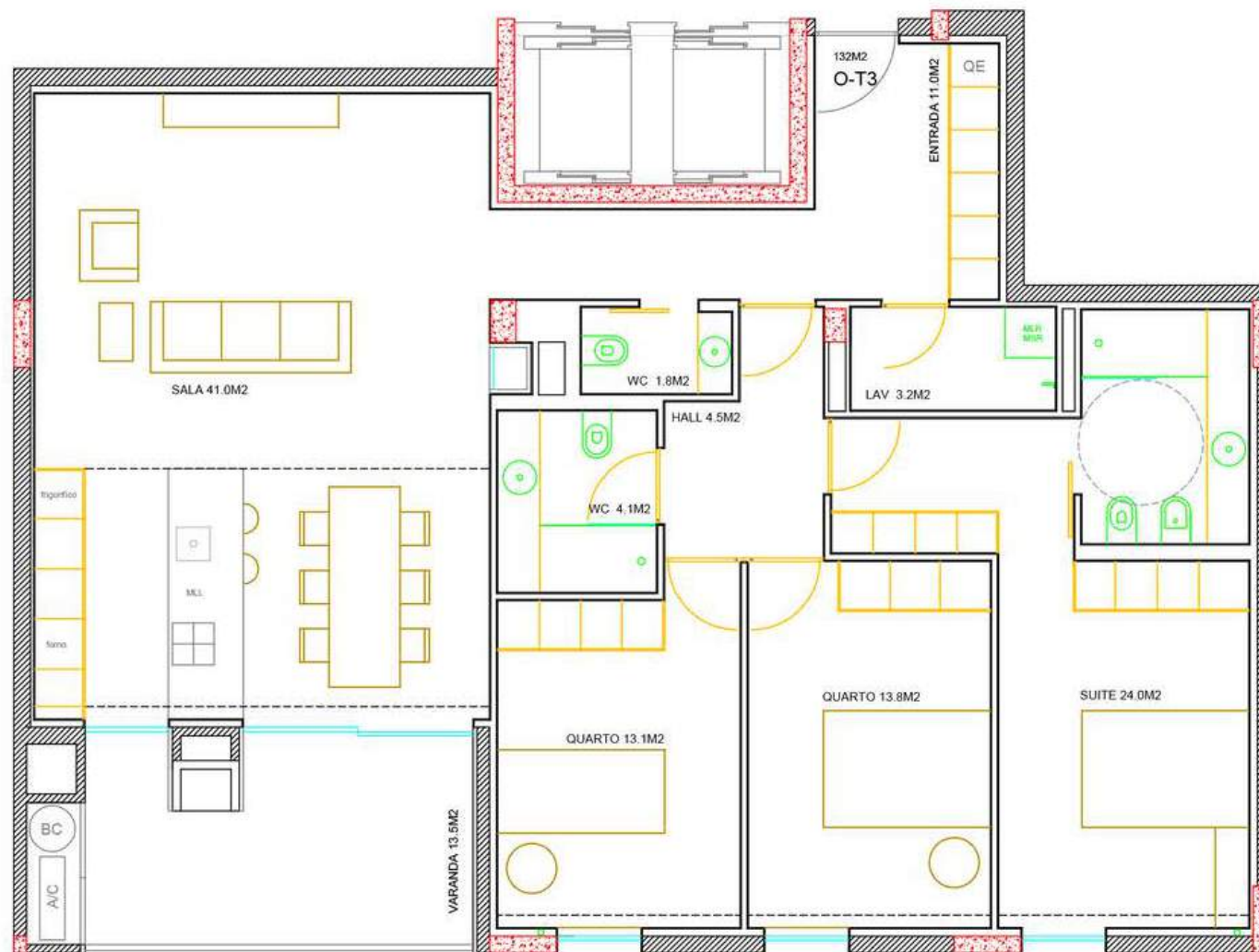


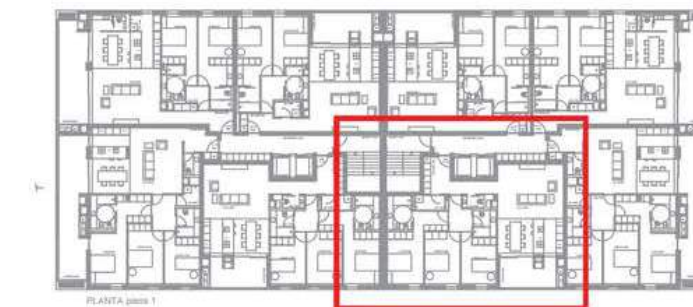
PLANTA pisos 1

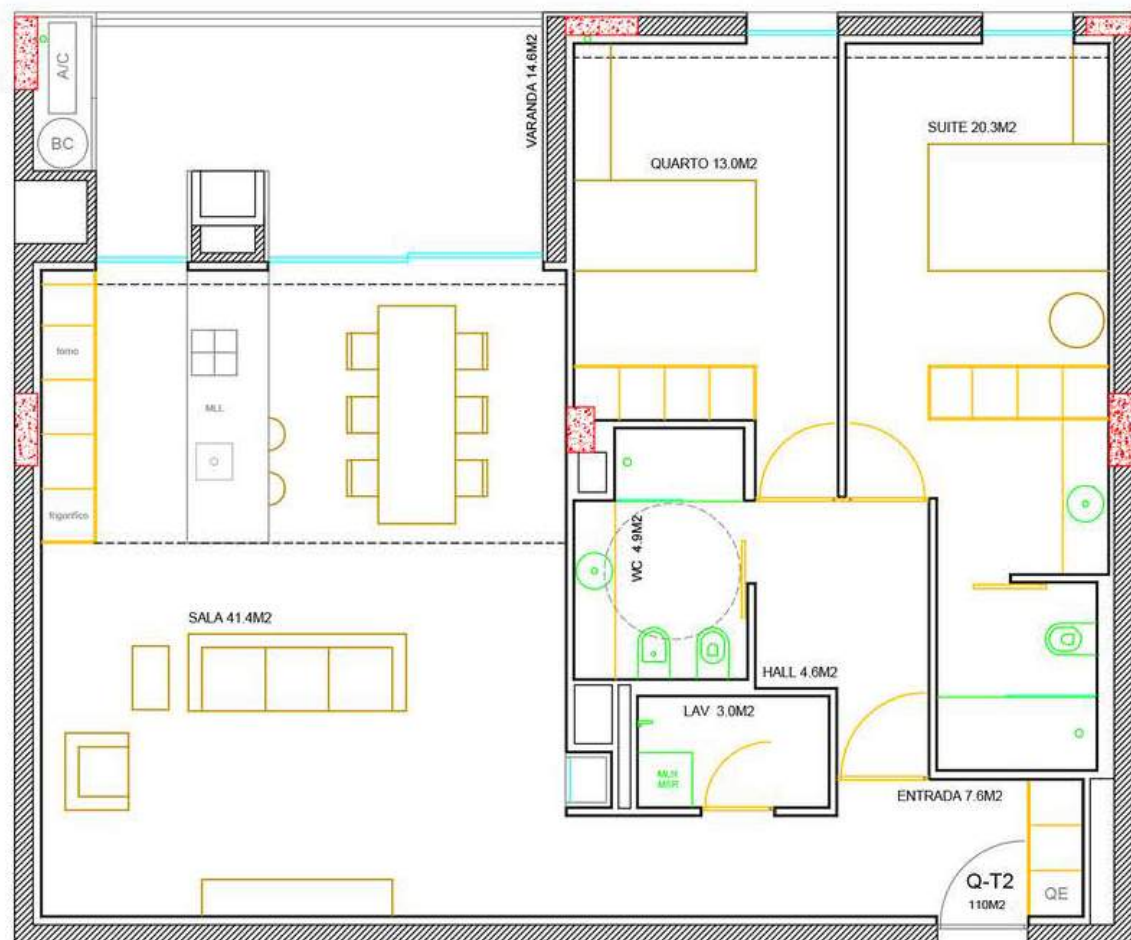


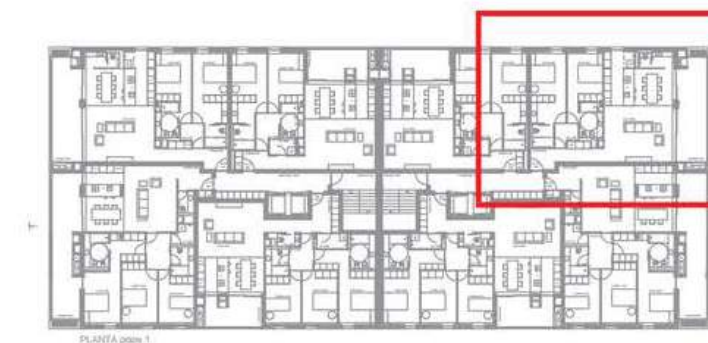
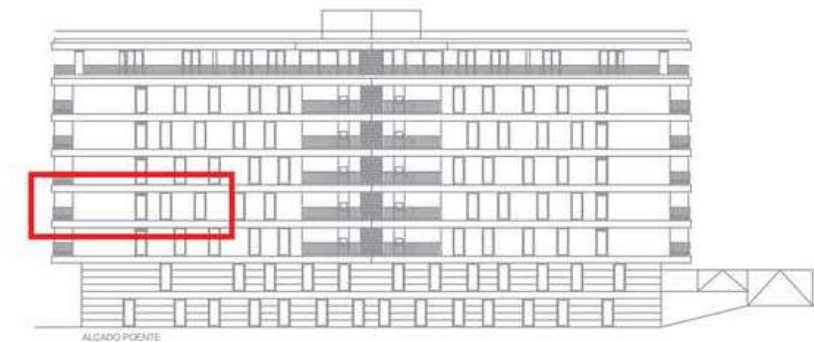


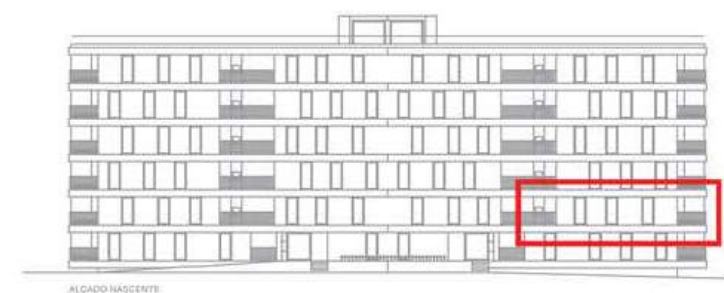
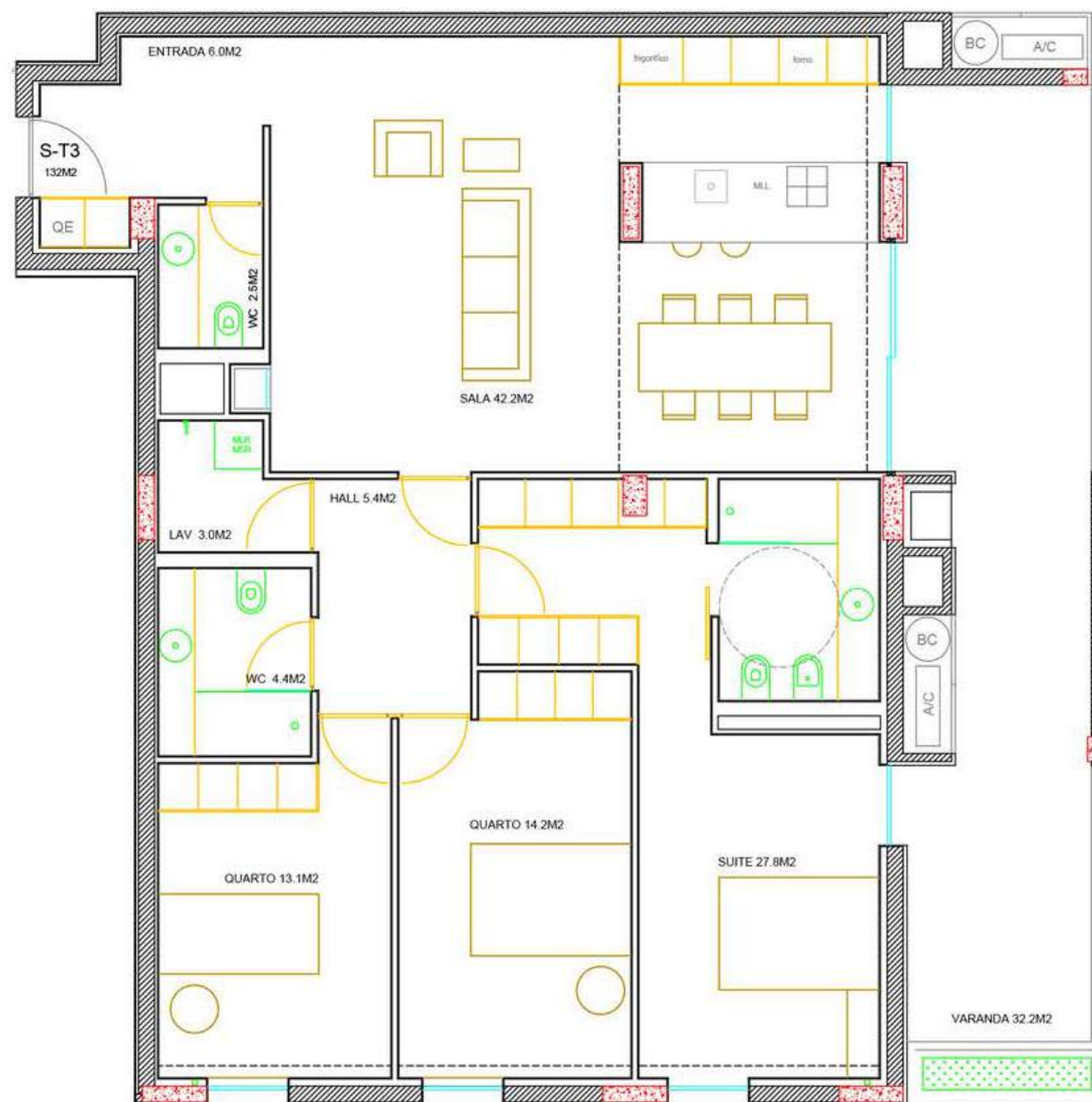






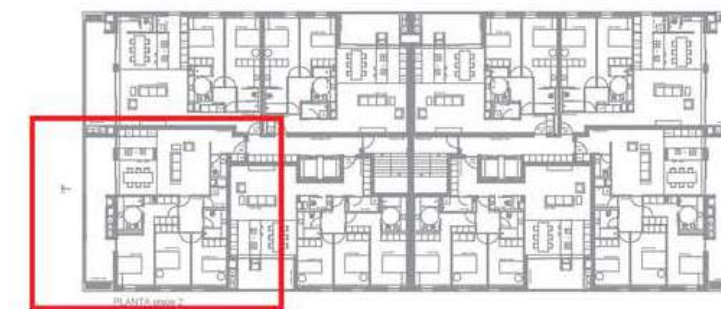
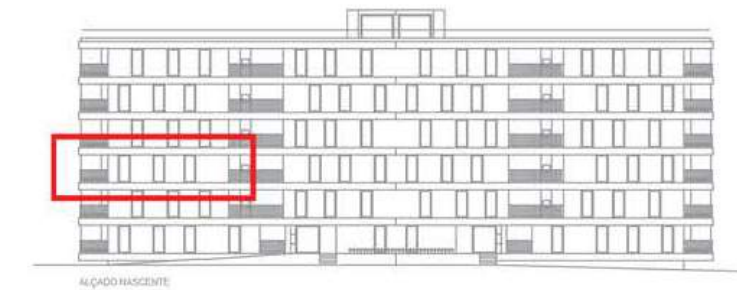
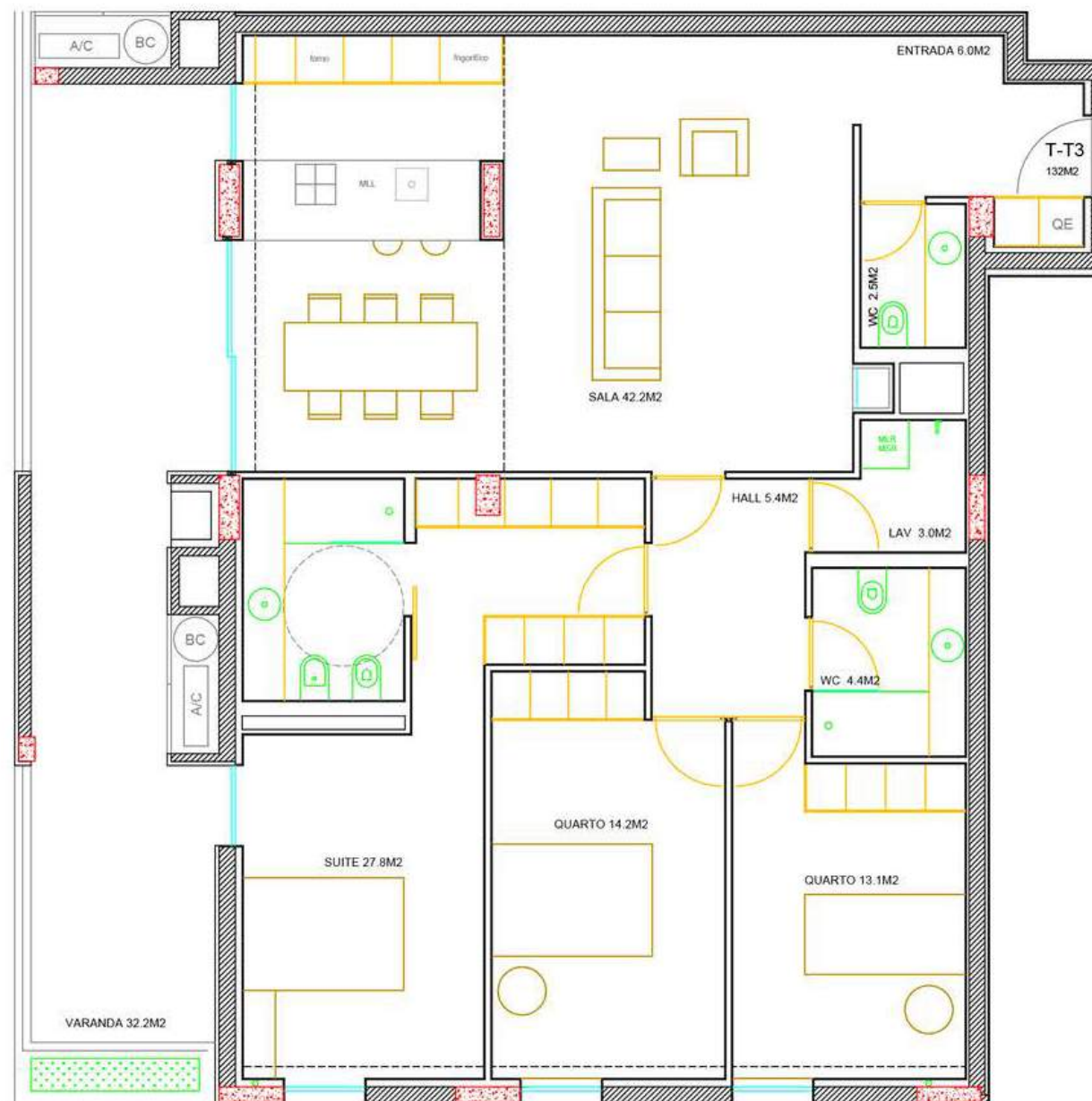


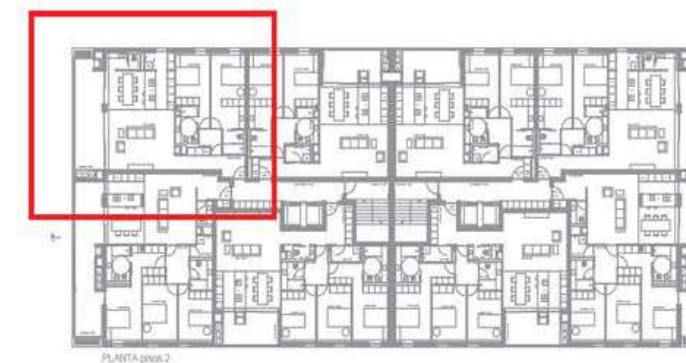
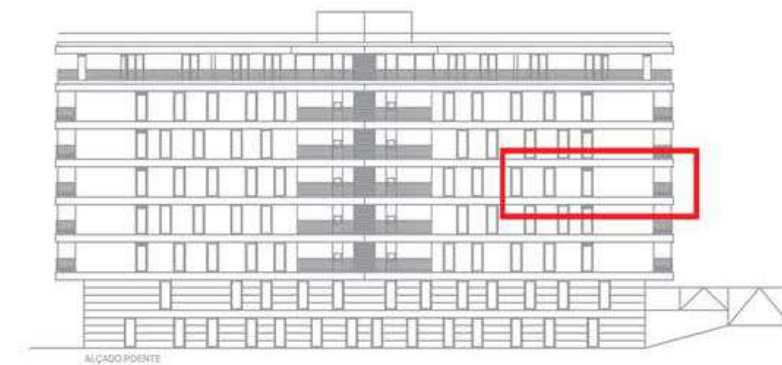


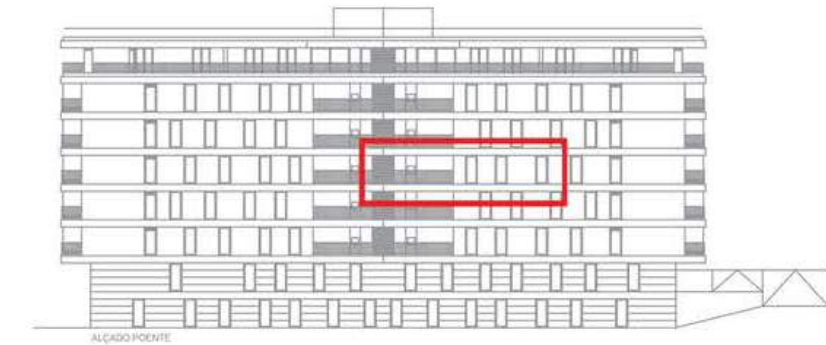
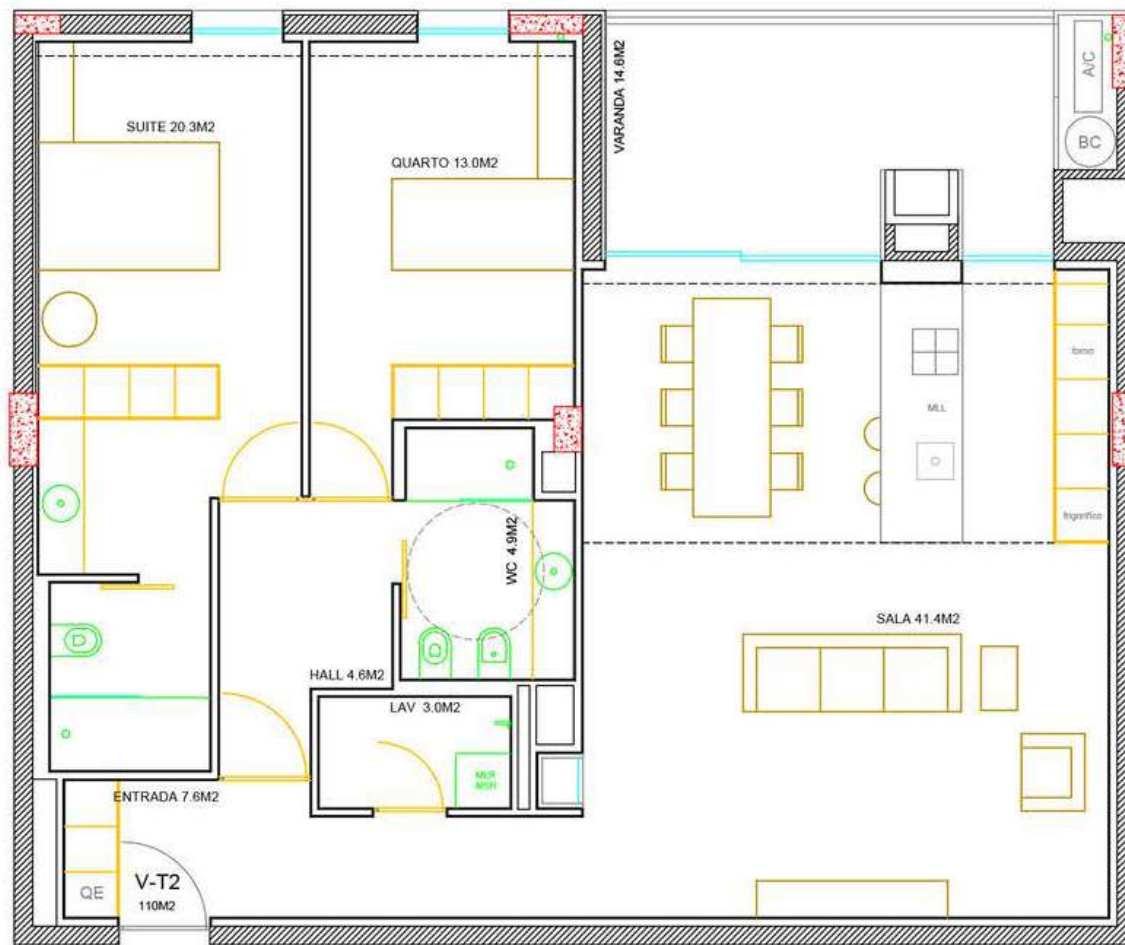


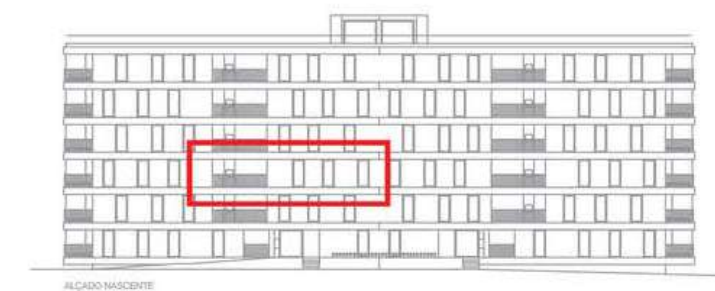


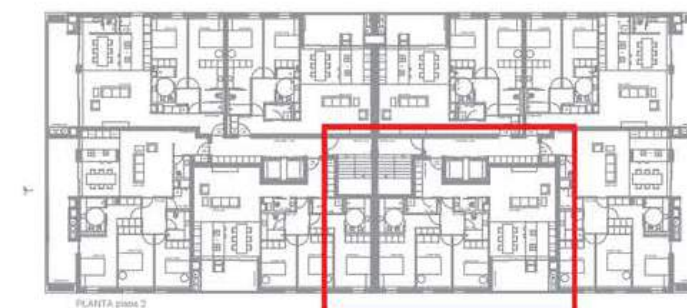
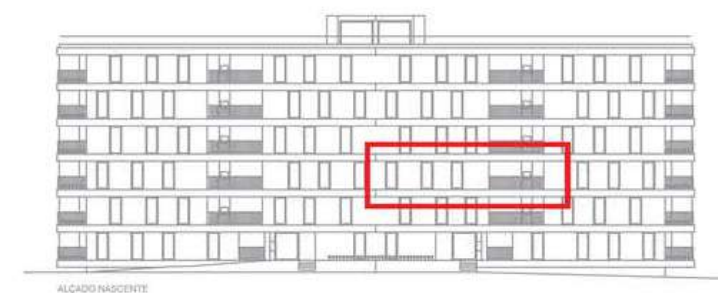
PLANTA pisos 2

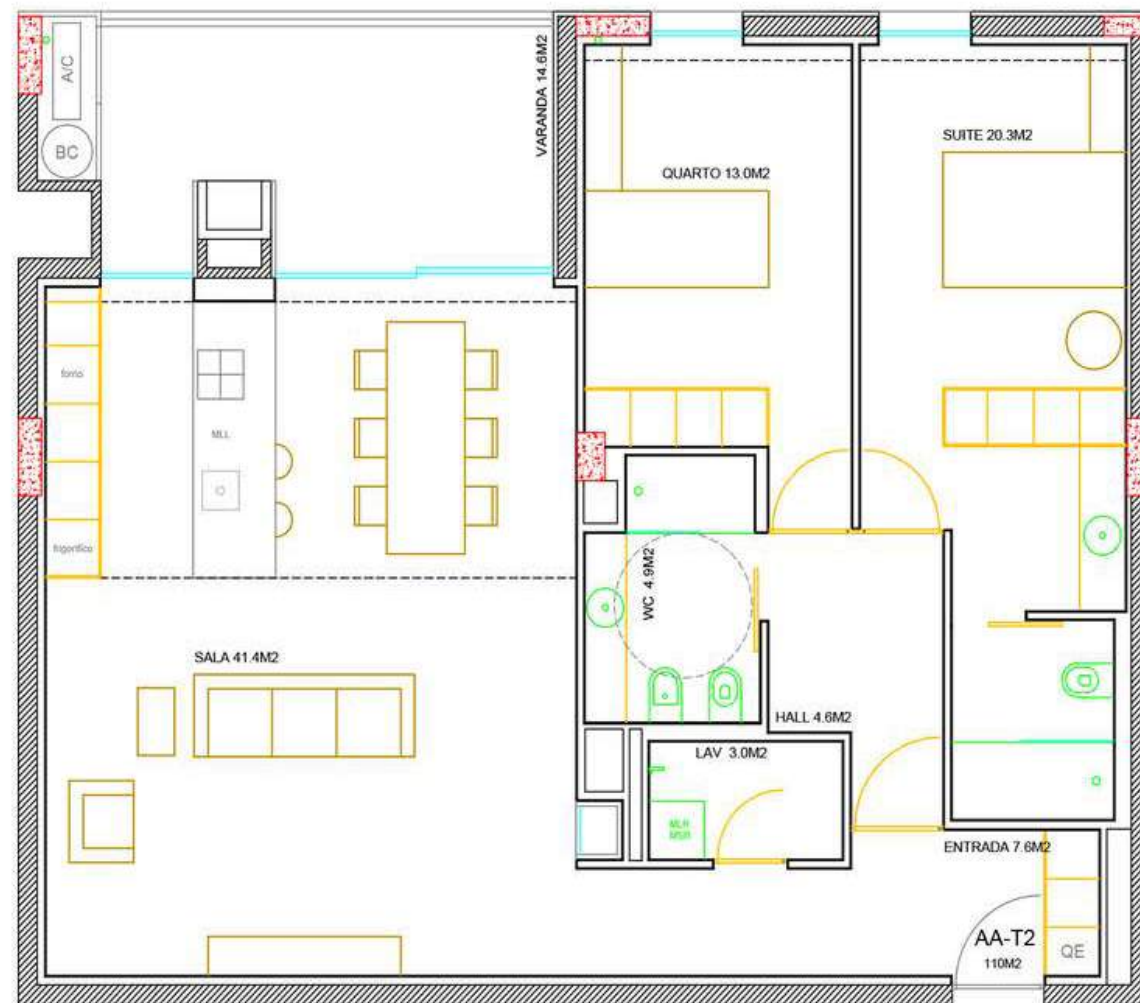


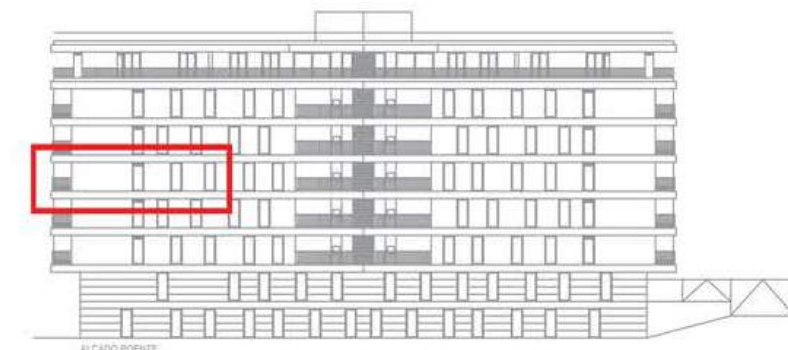


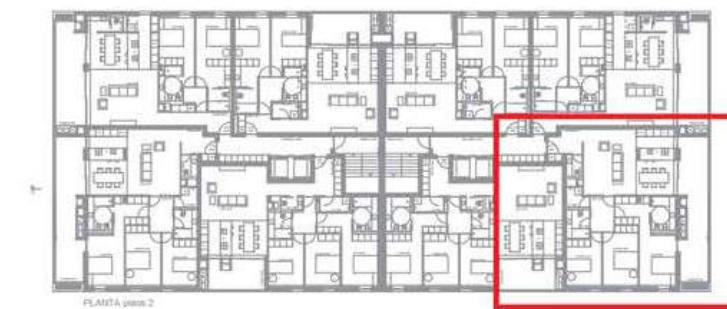
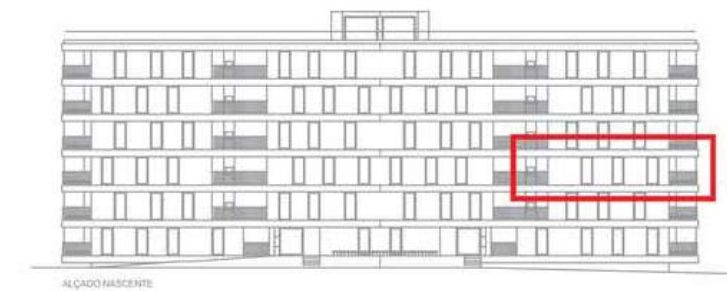
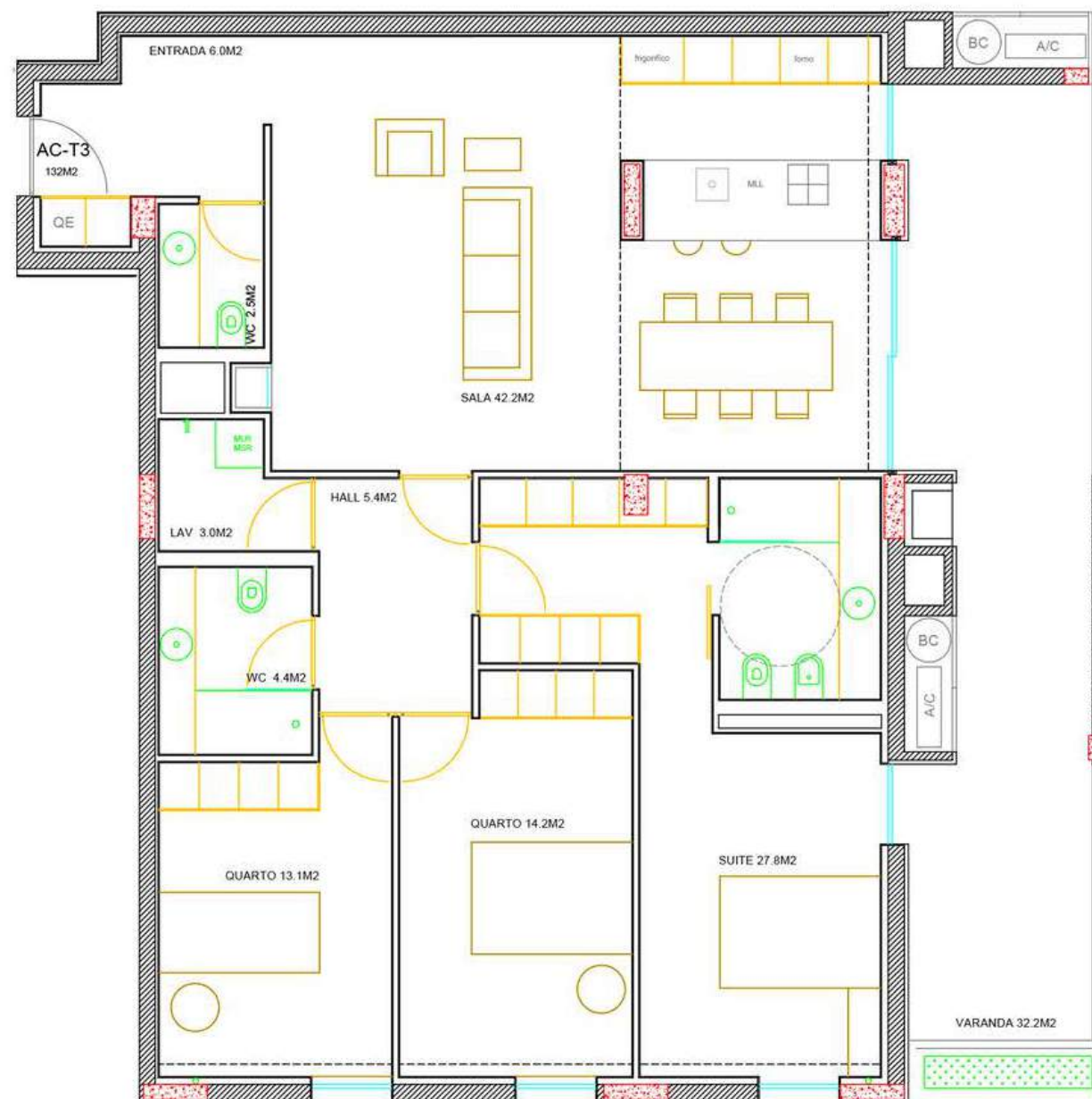






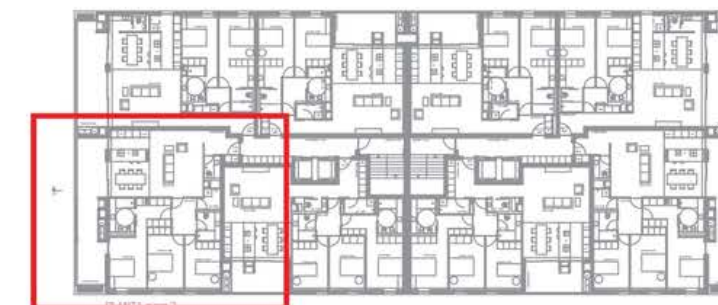
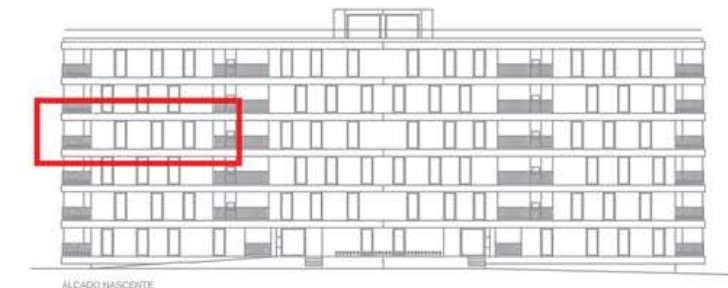
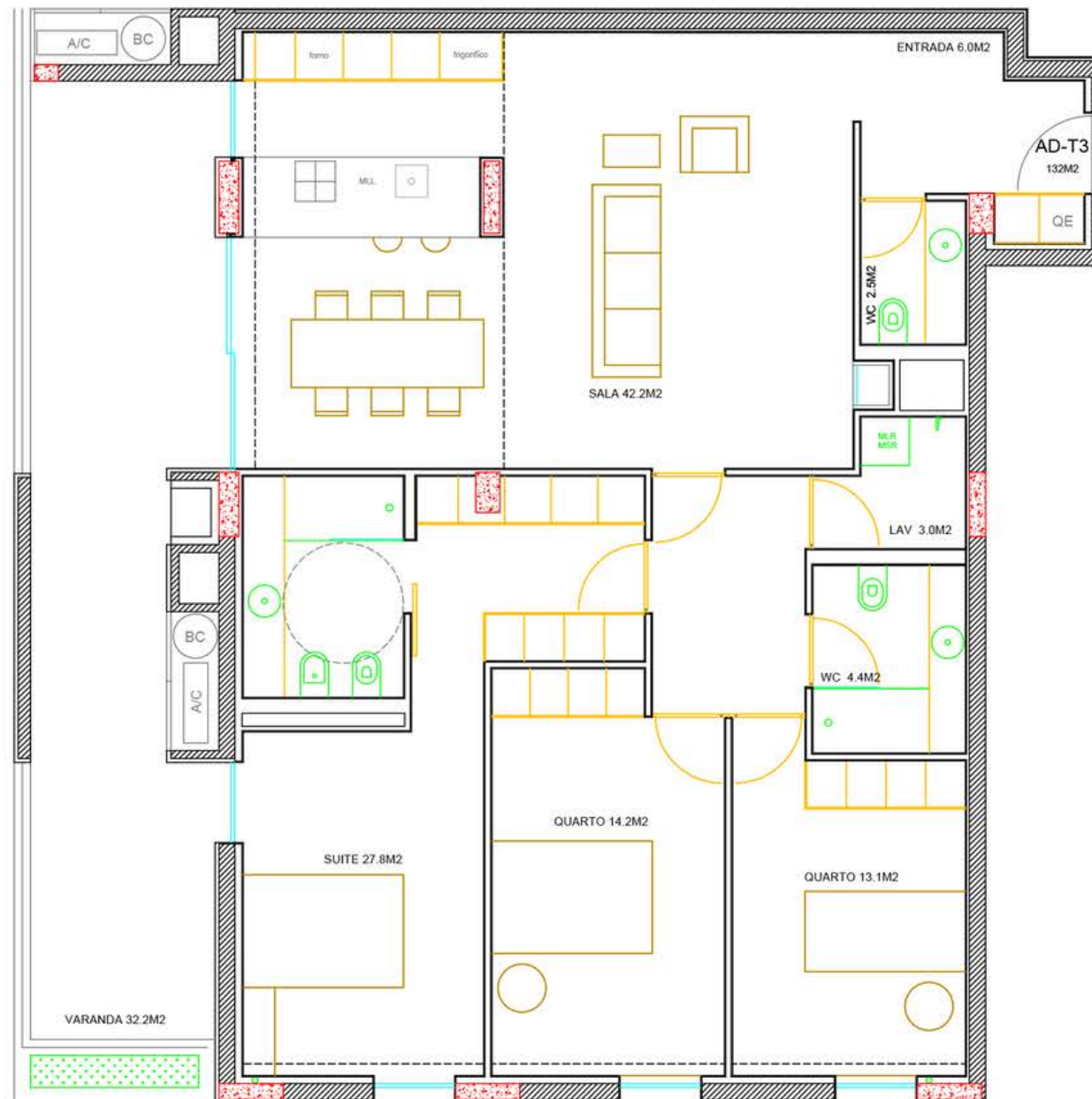


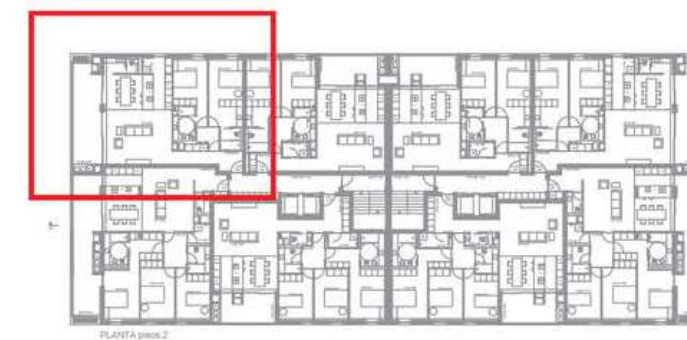
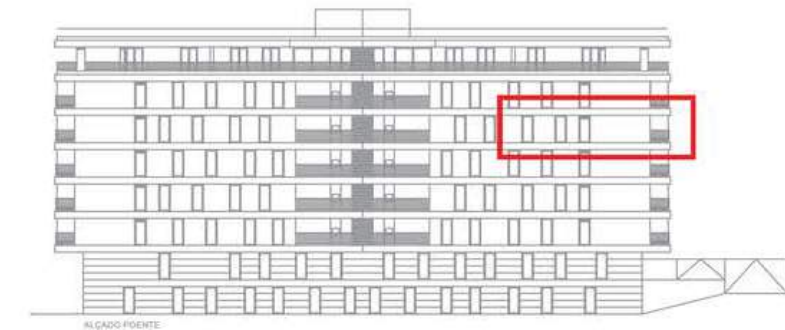


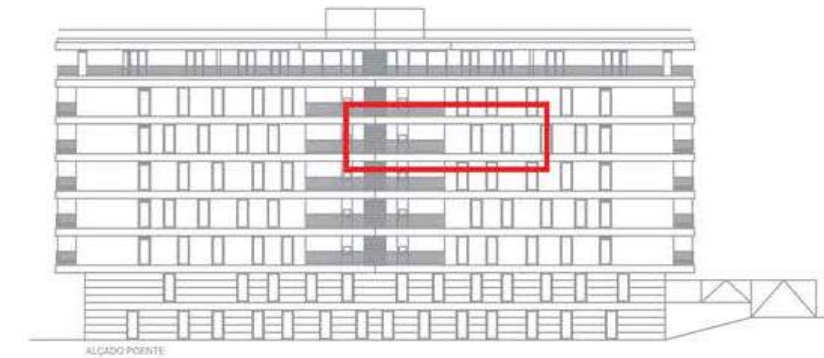
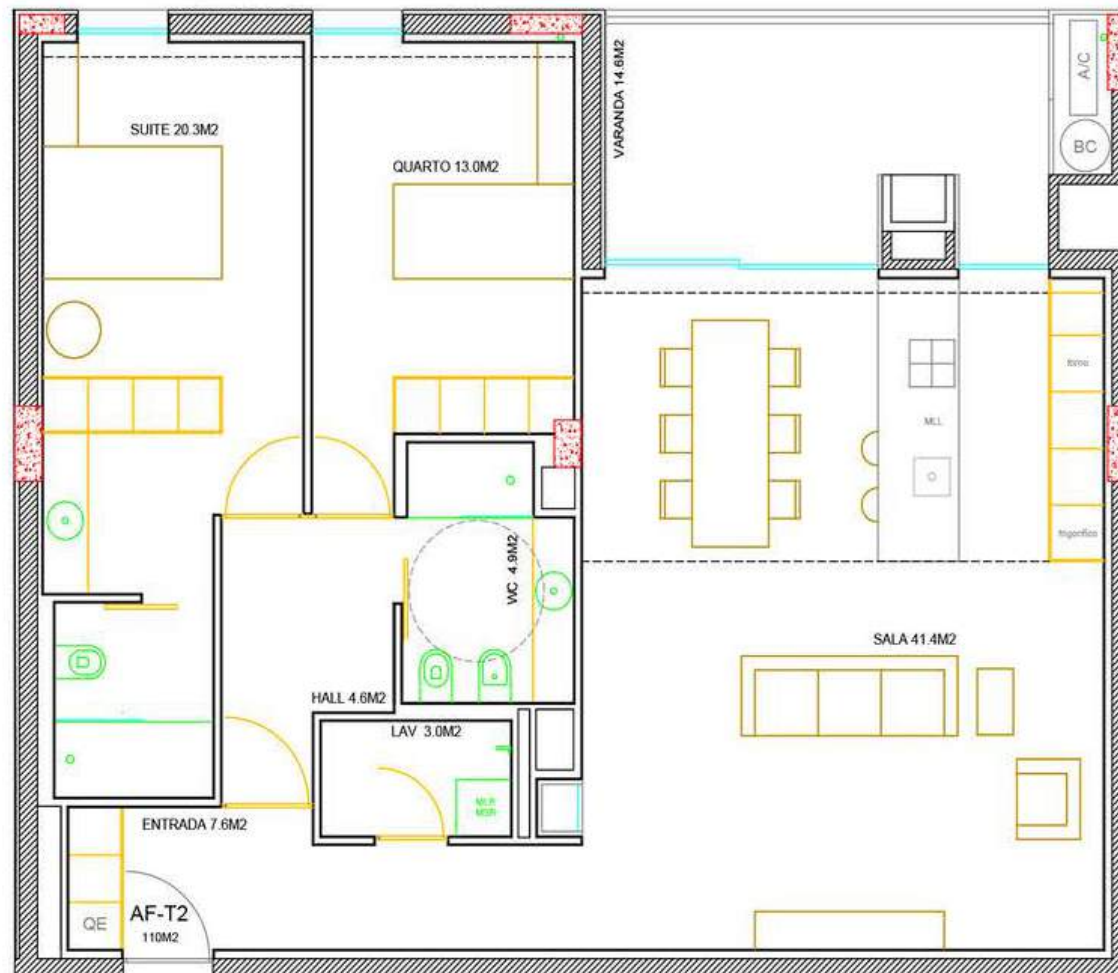


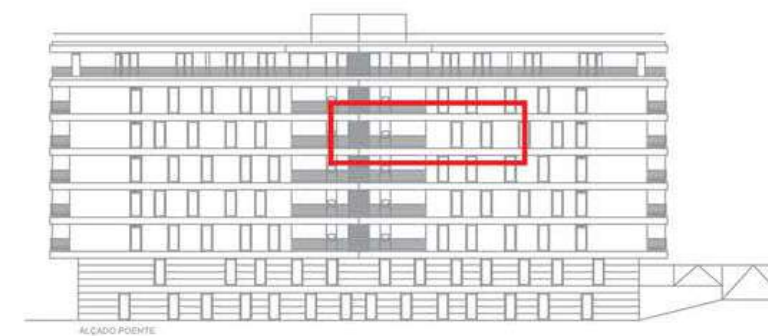


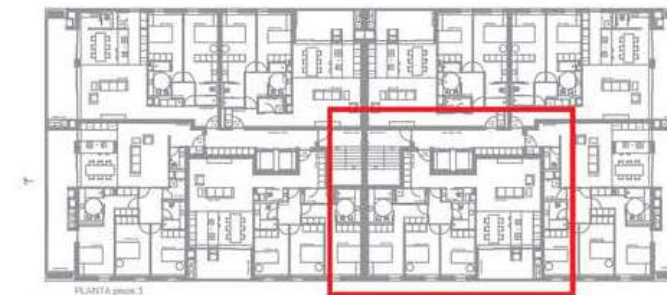
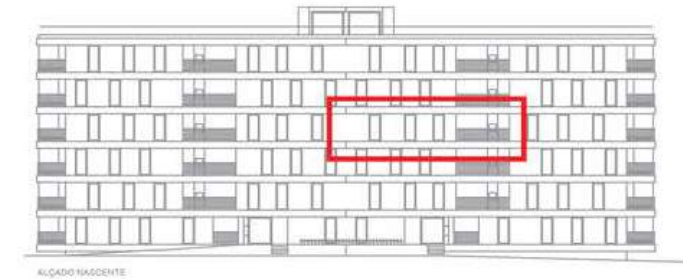
PLANTA pisos 3

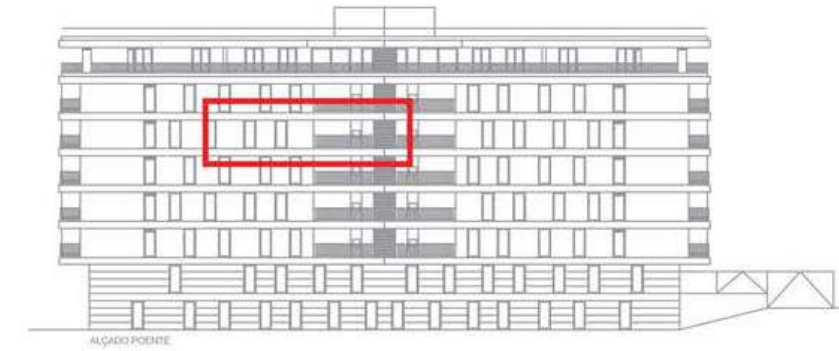
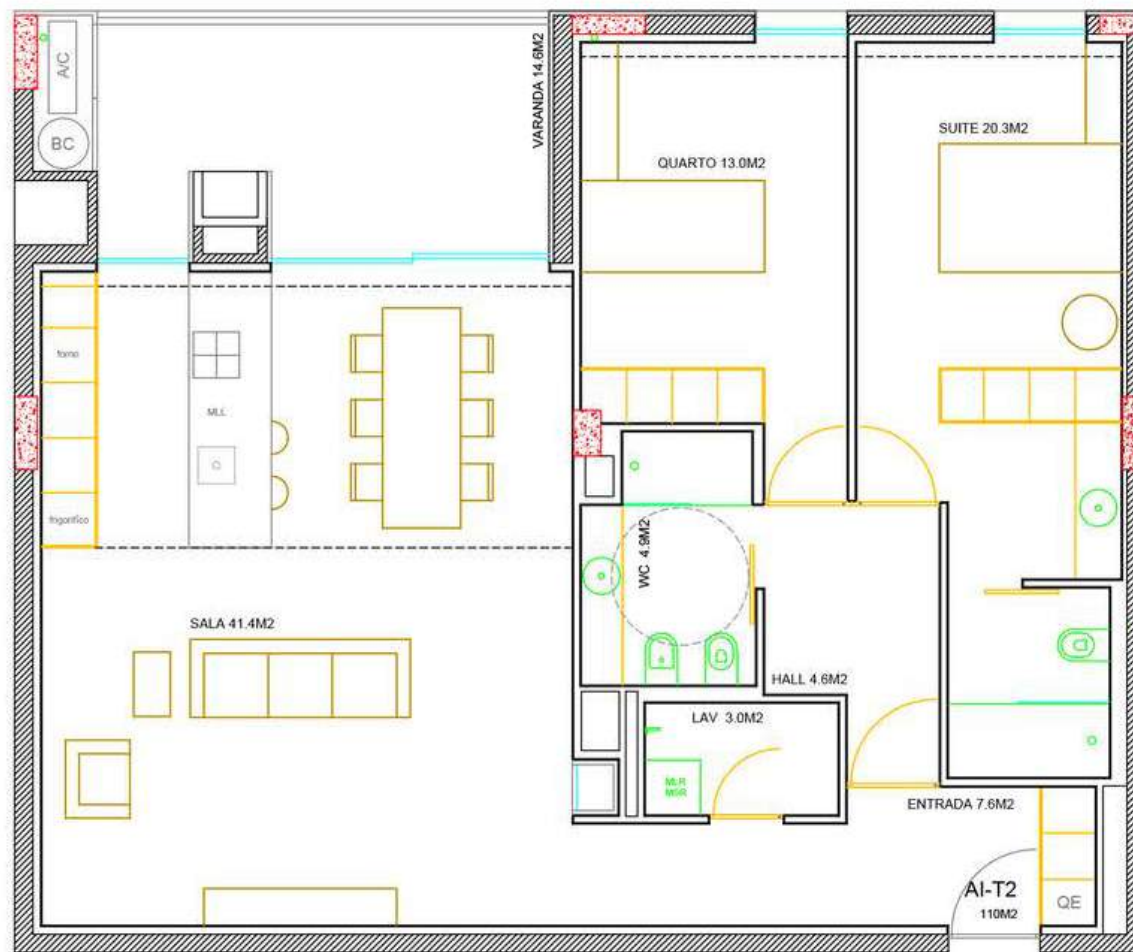


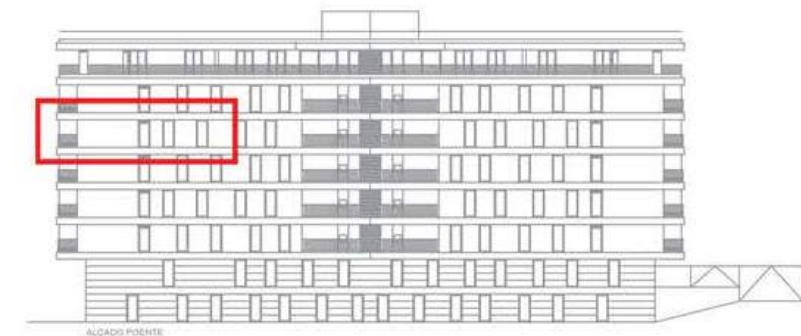


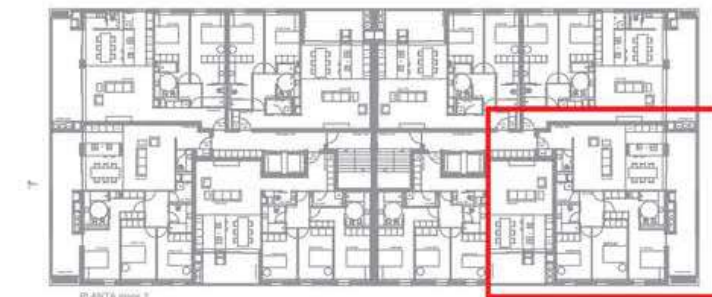
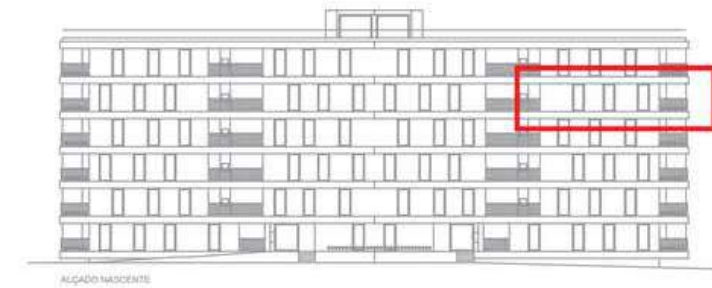
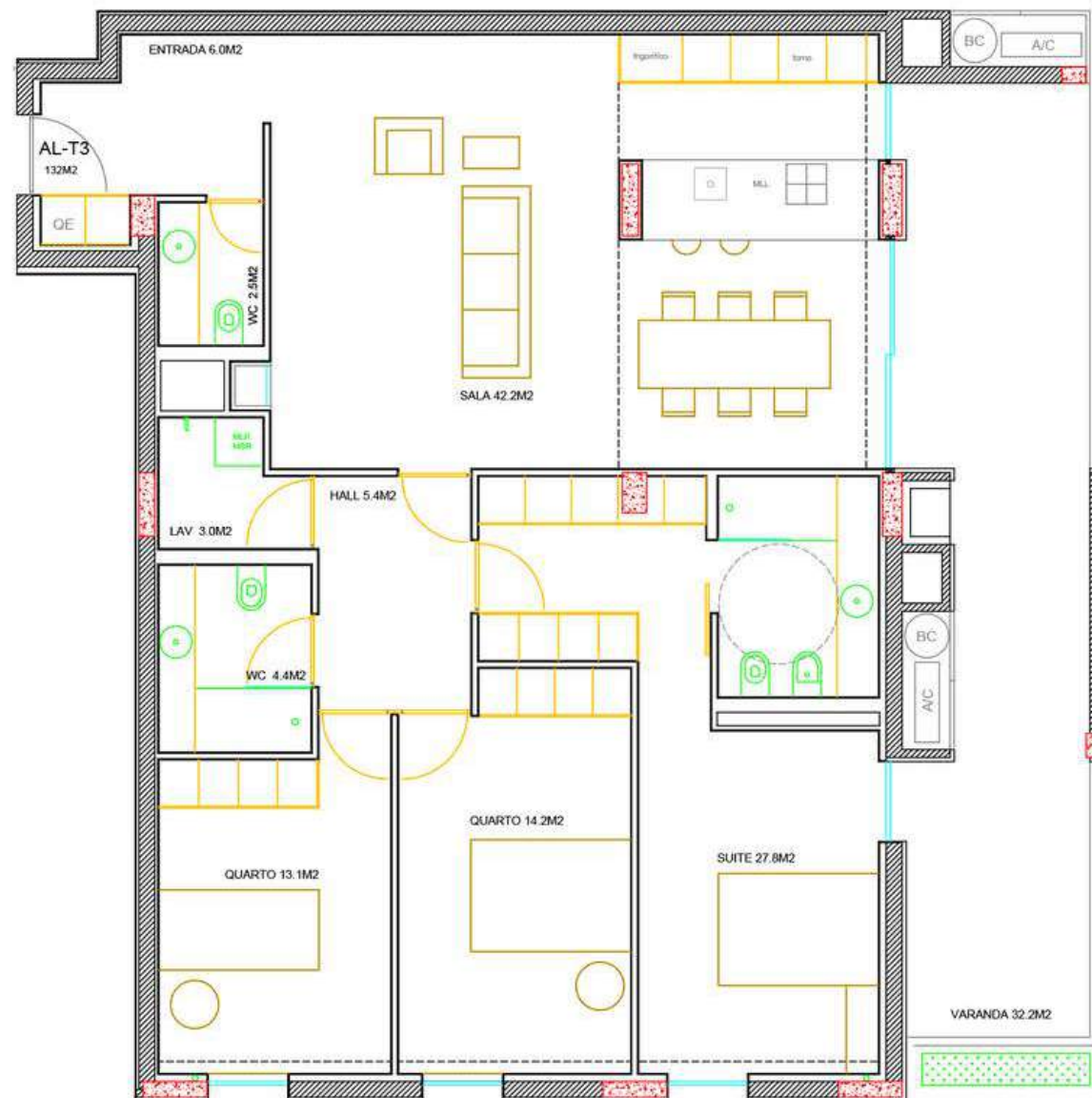






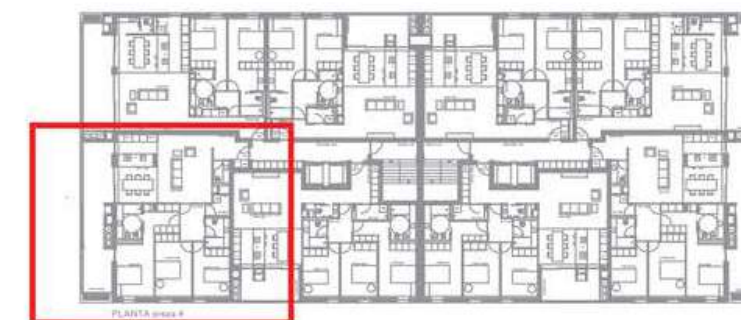
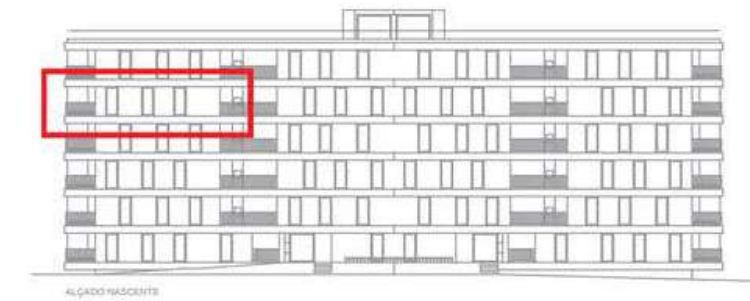
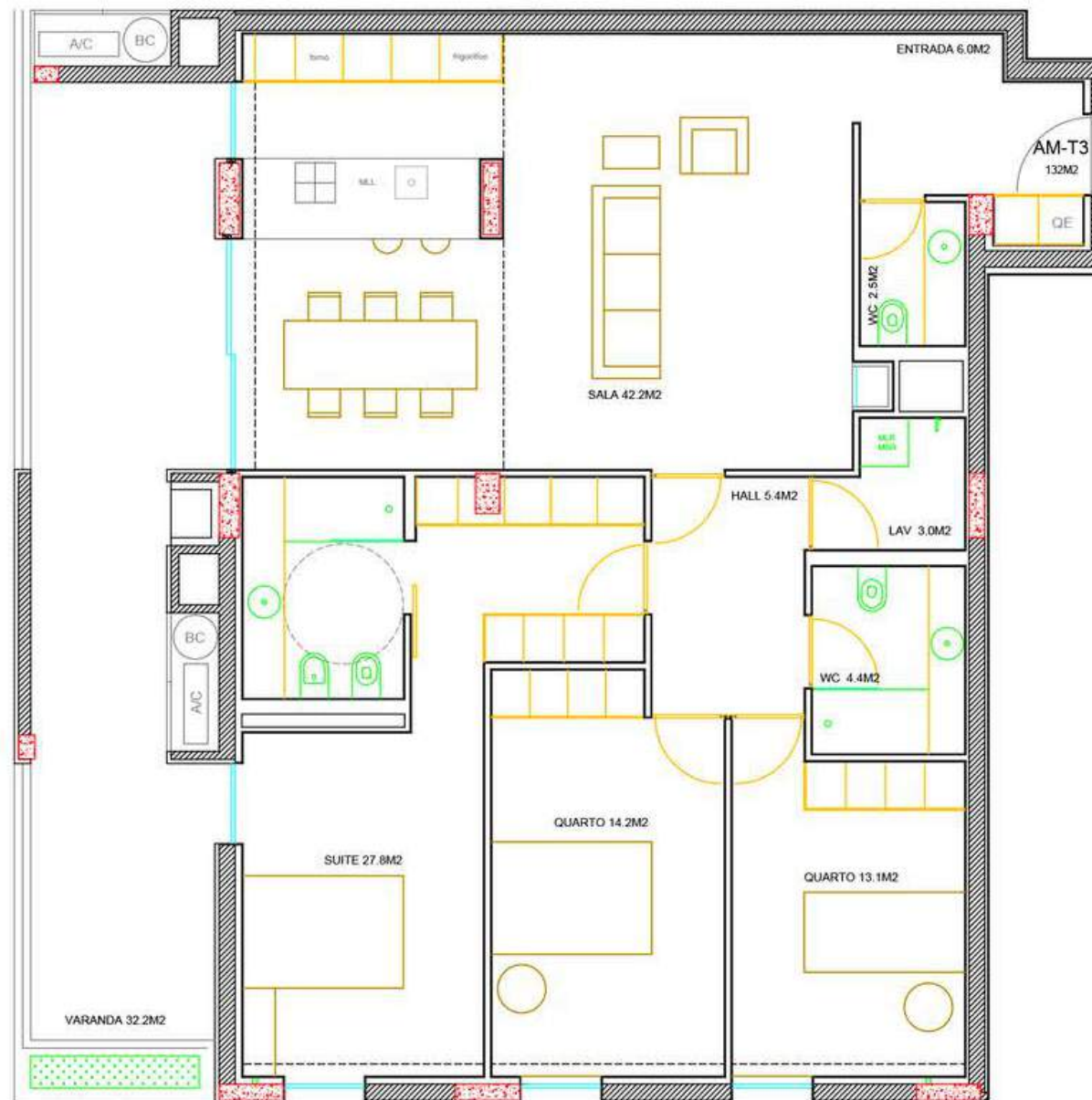


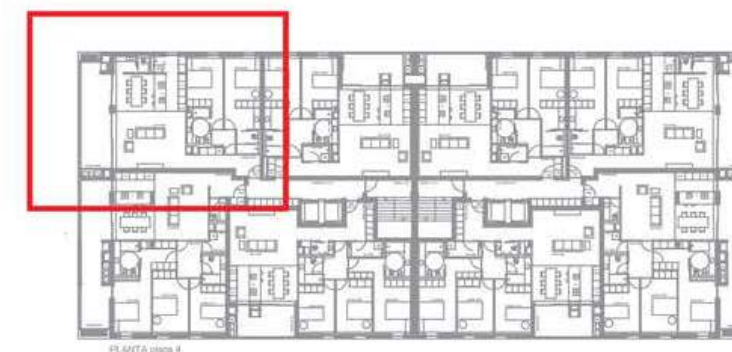


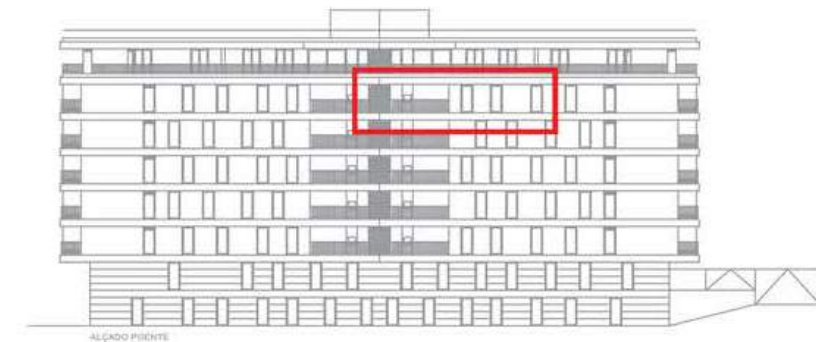
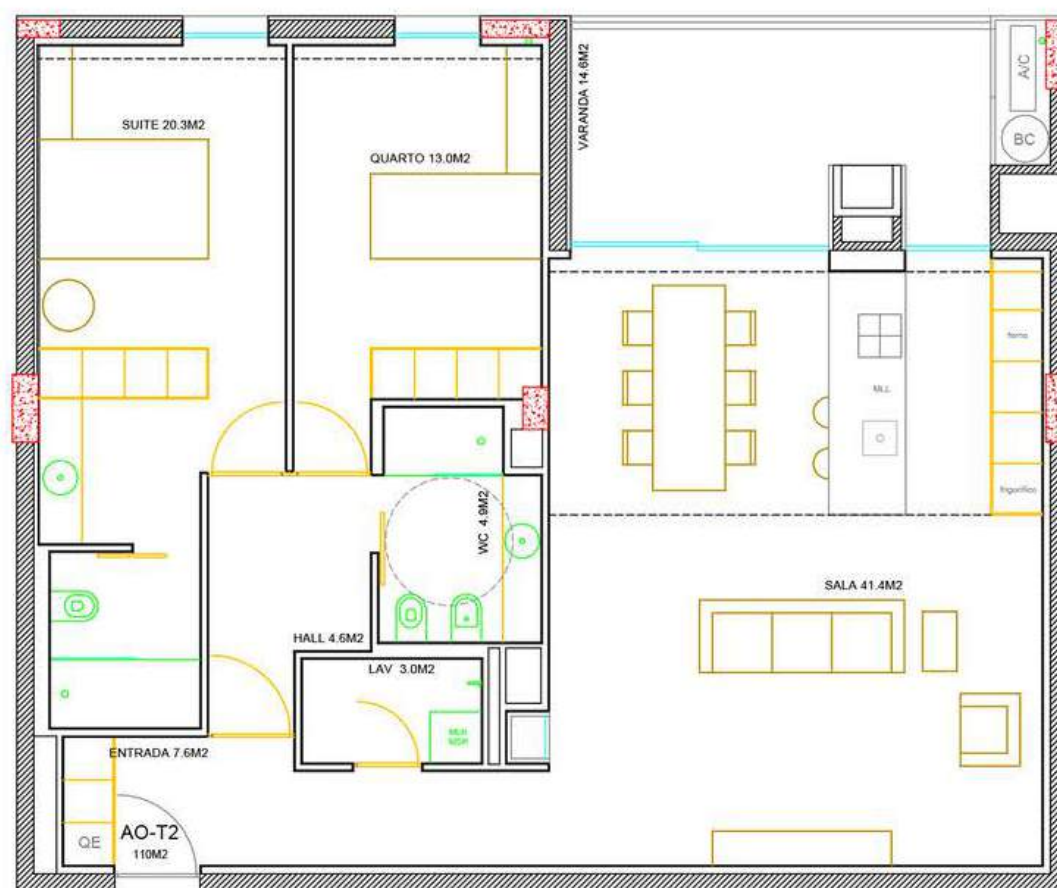


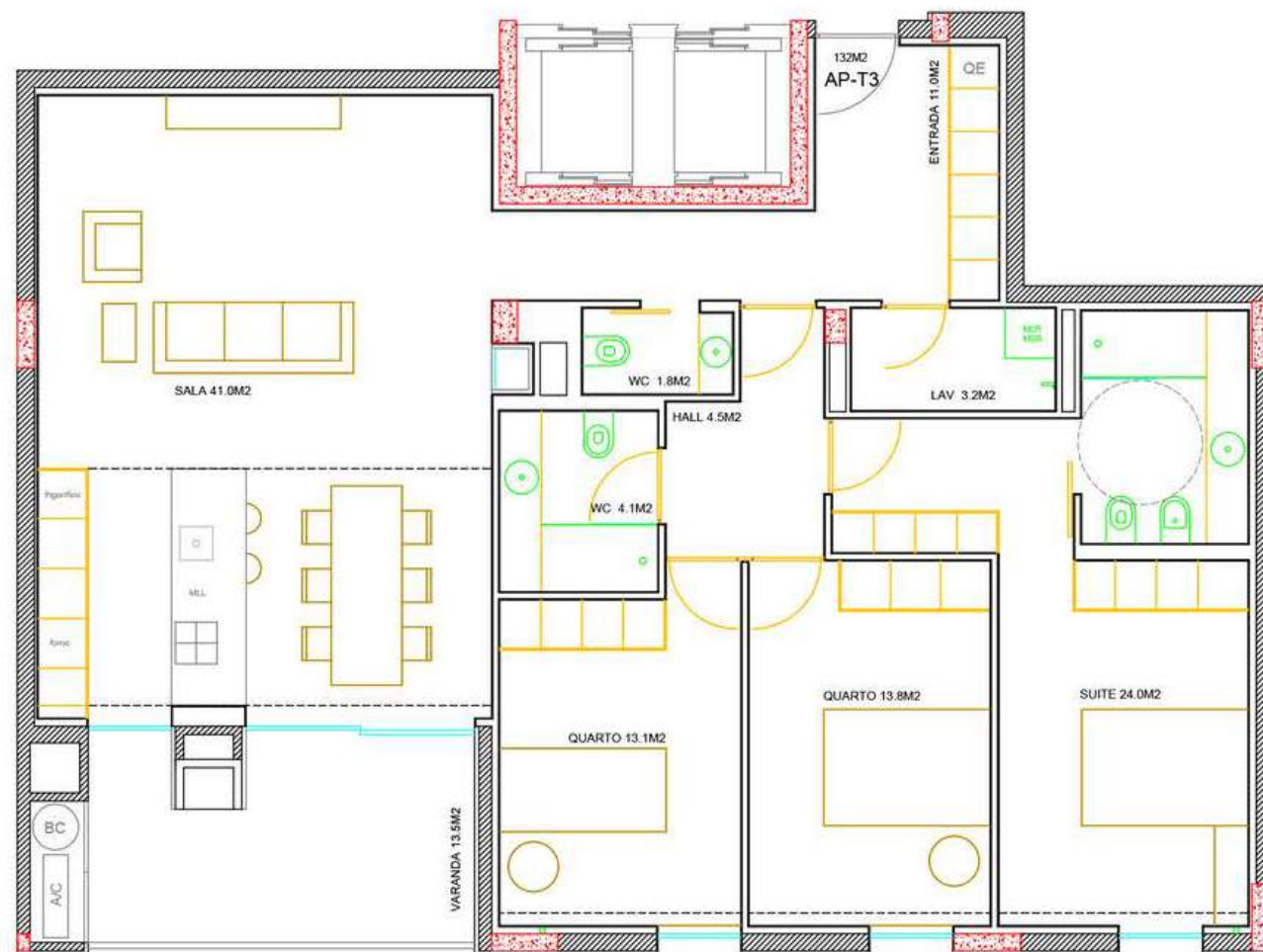


PLANTA pisos 4

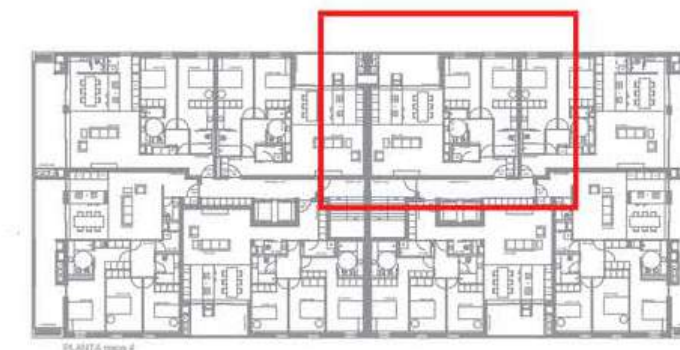
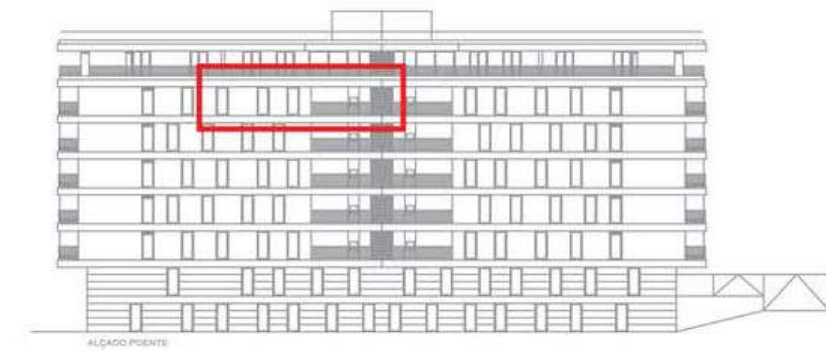
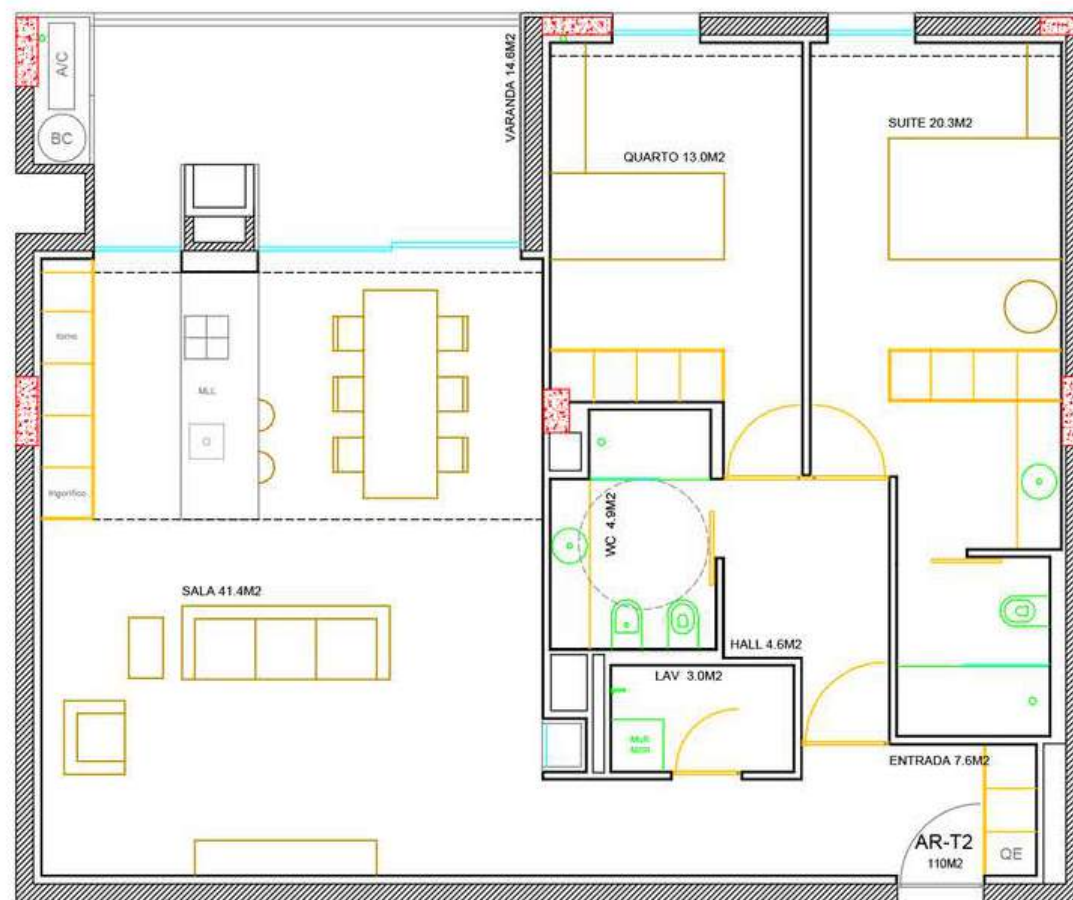


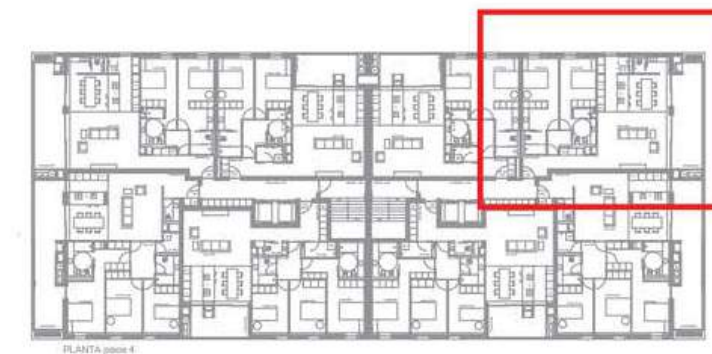
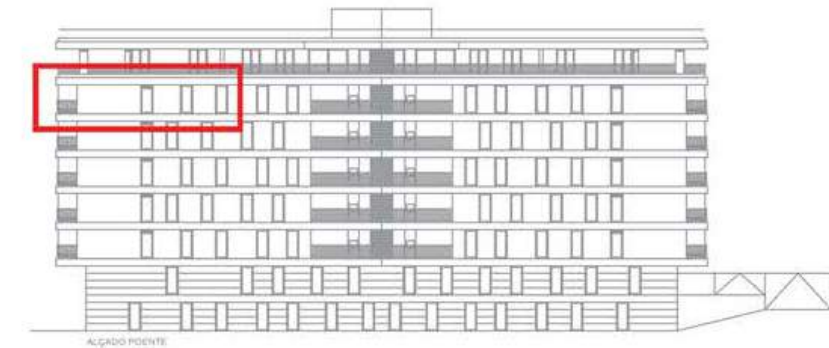


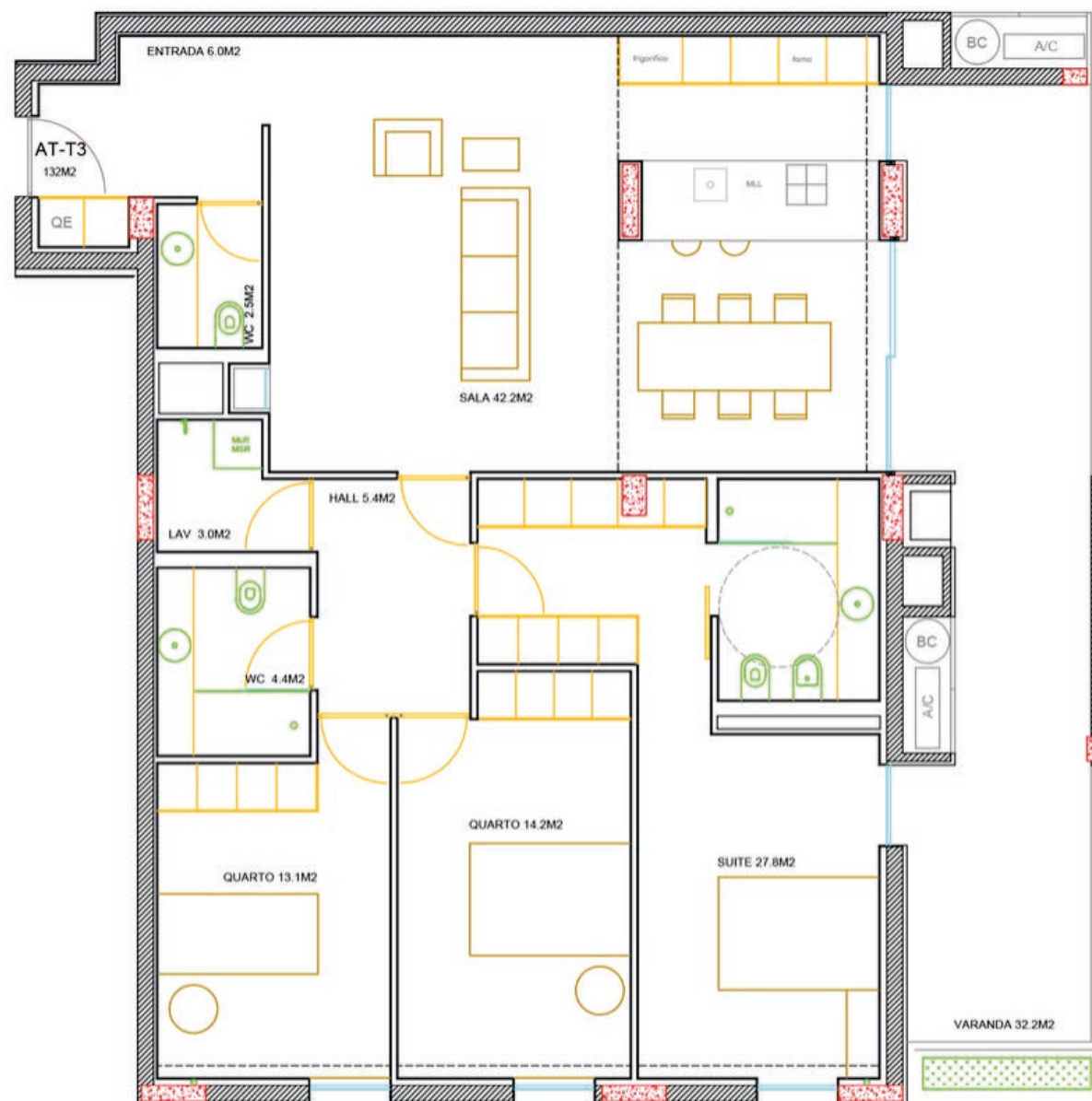






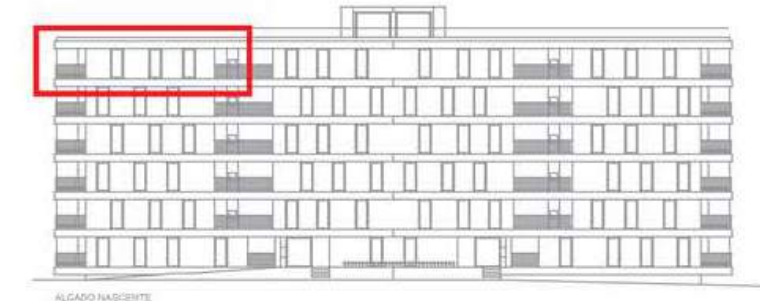
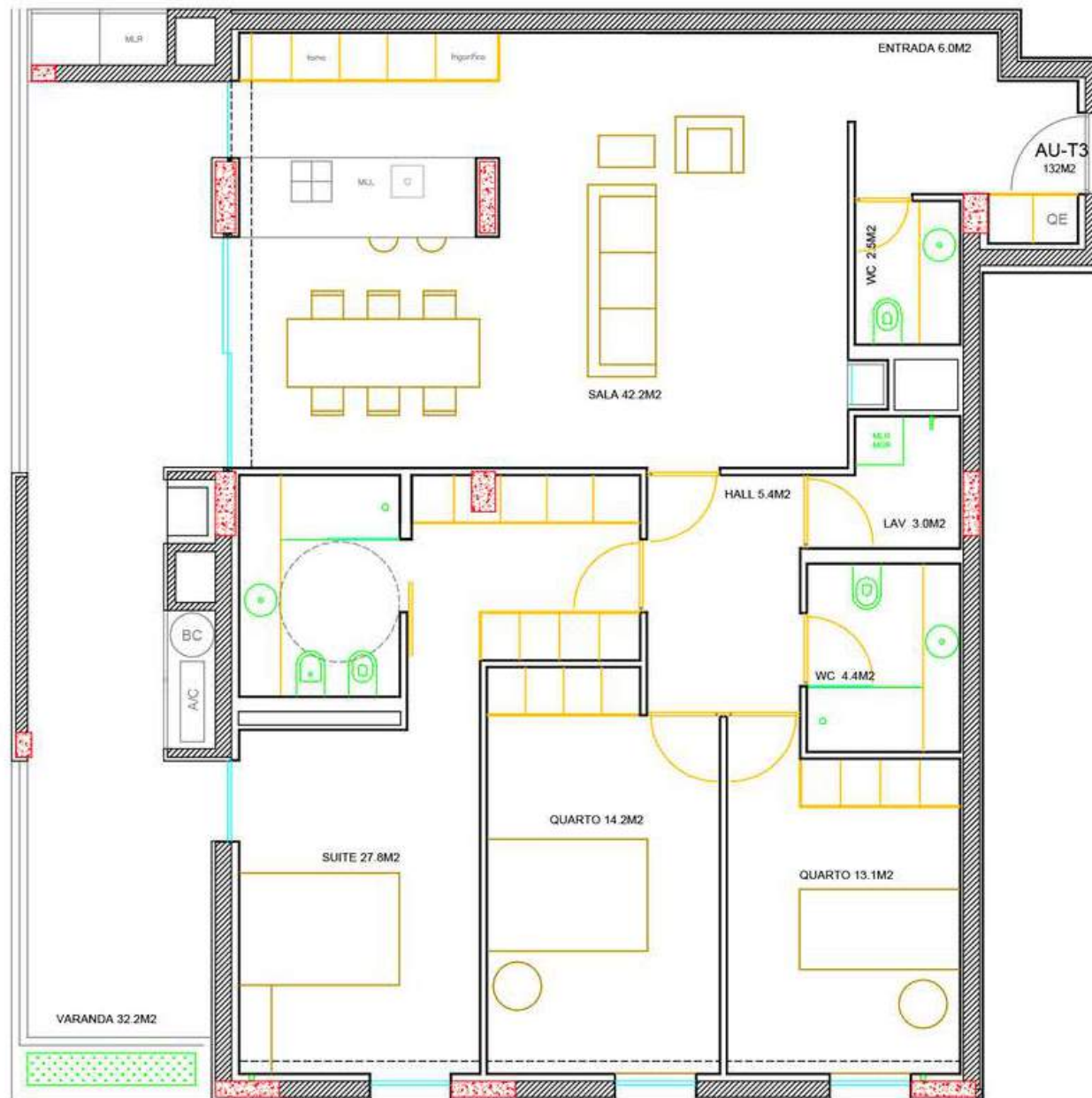


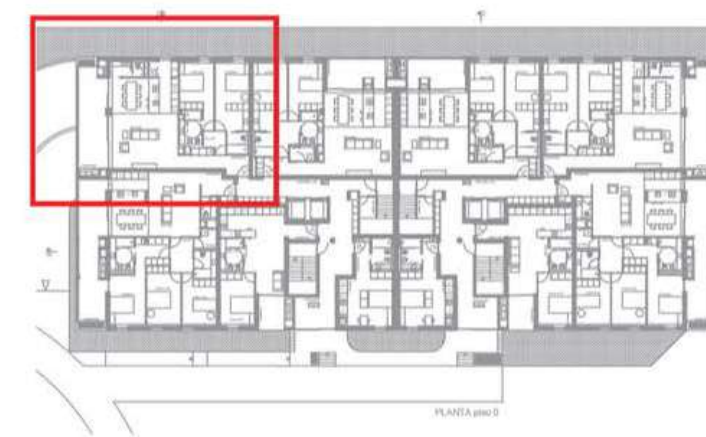
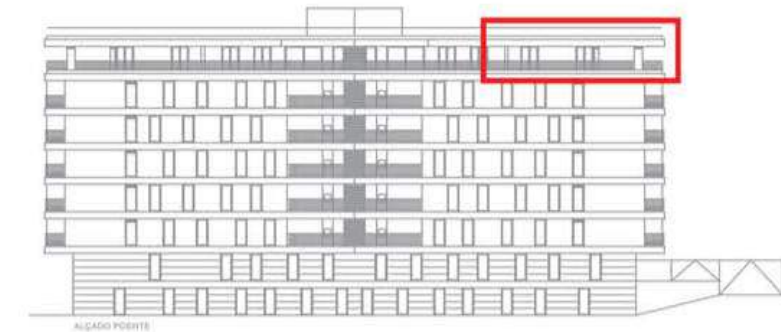
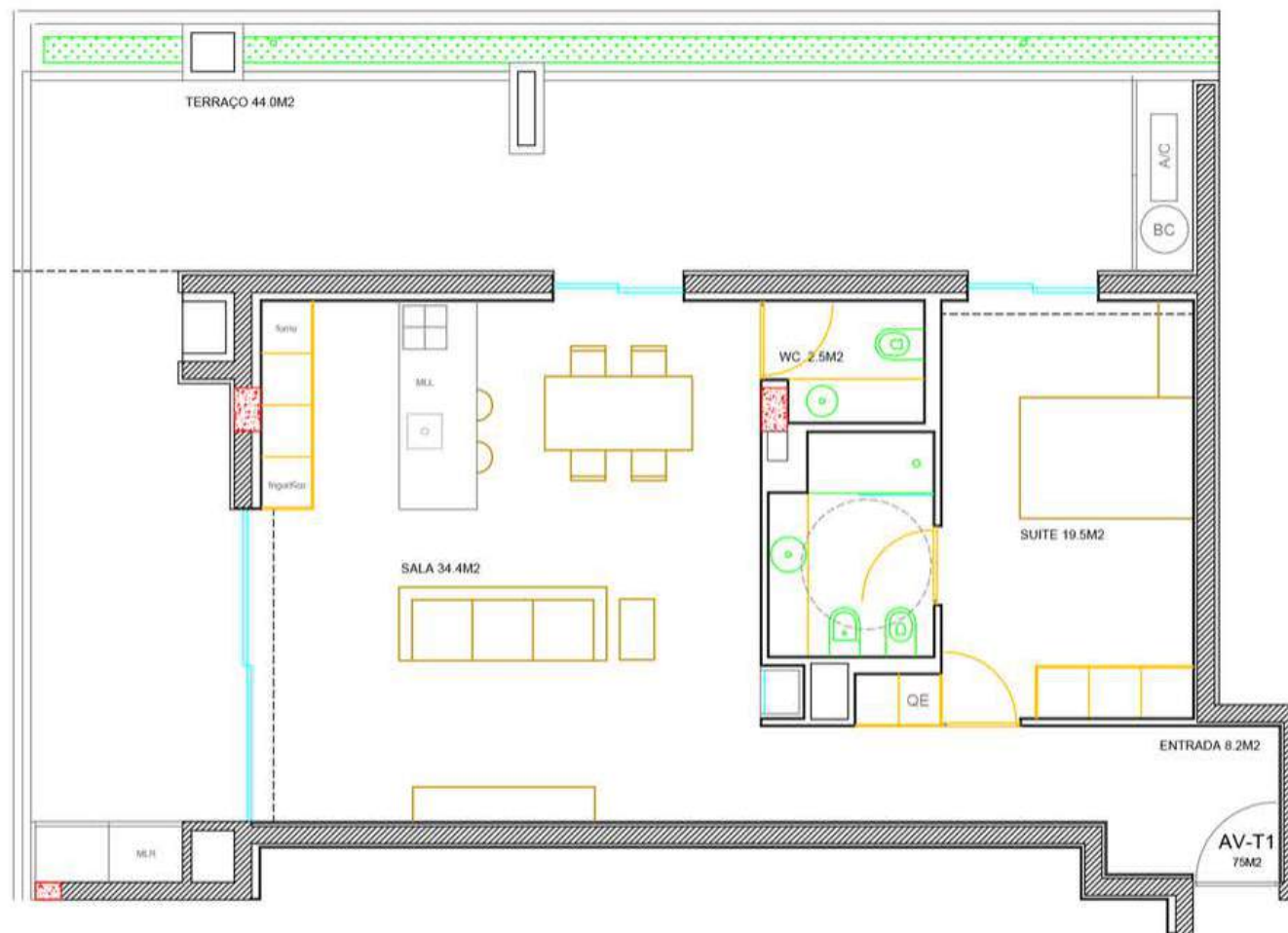


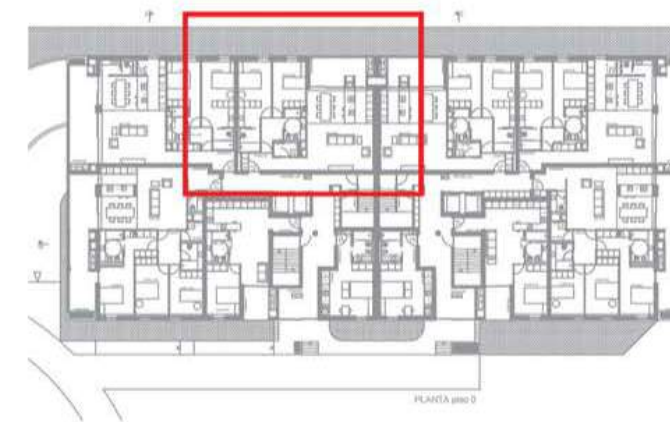
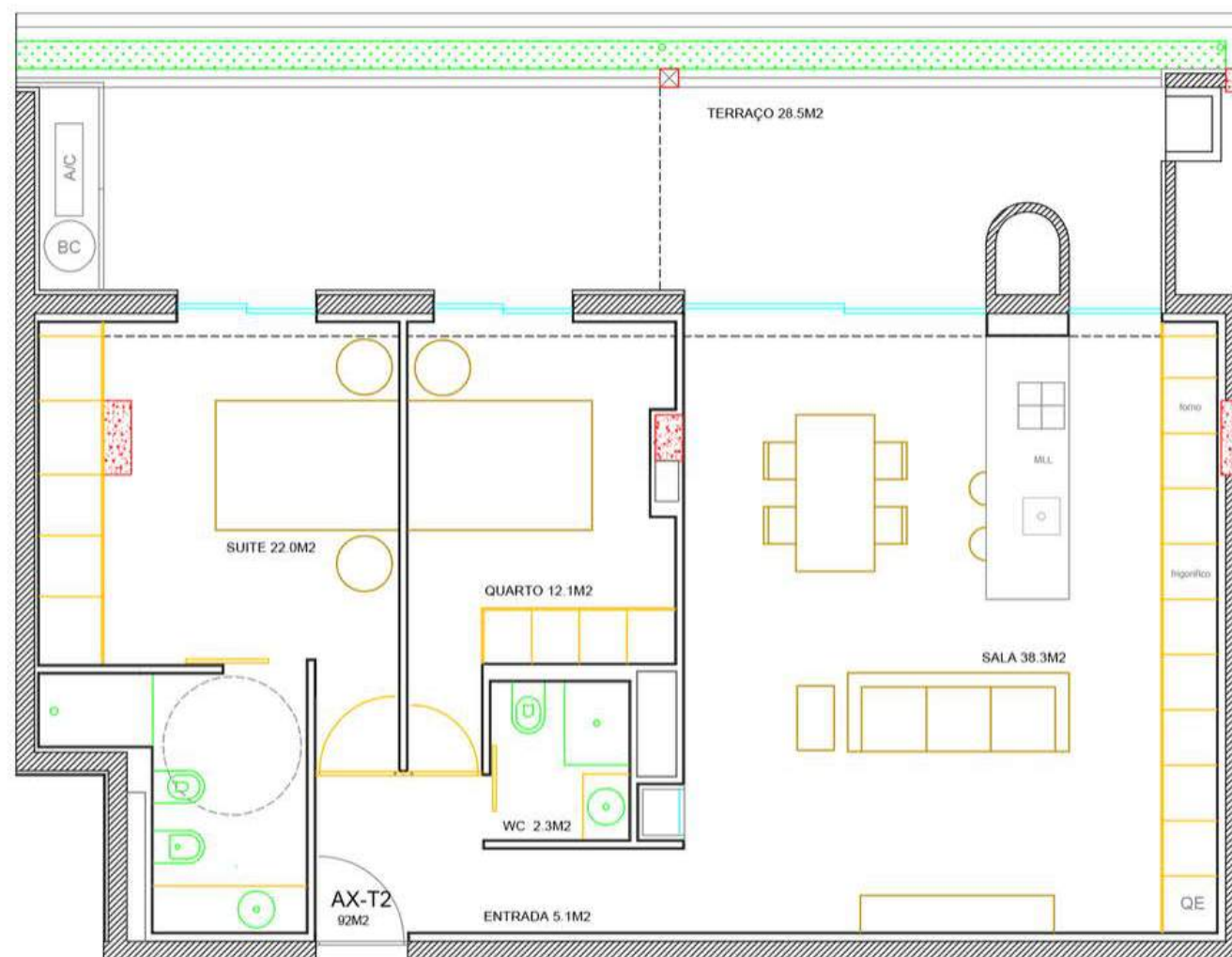


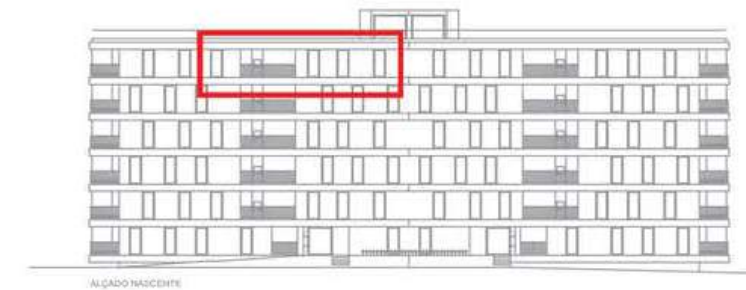


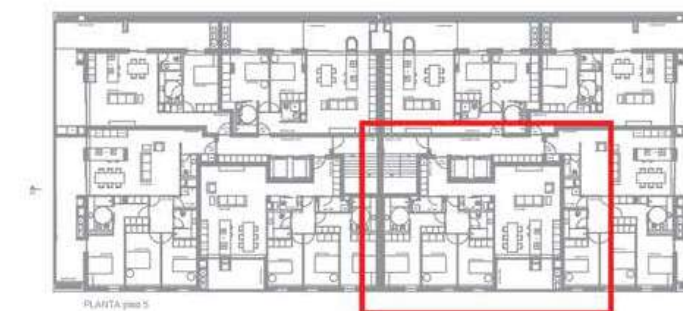
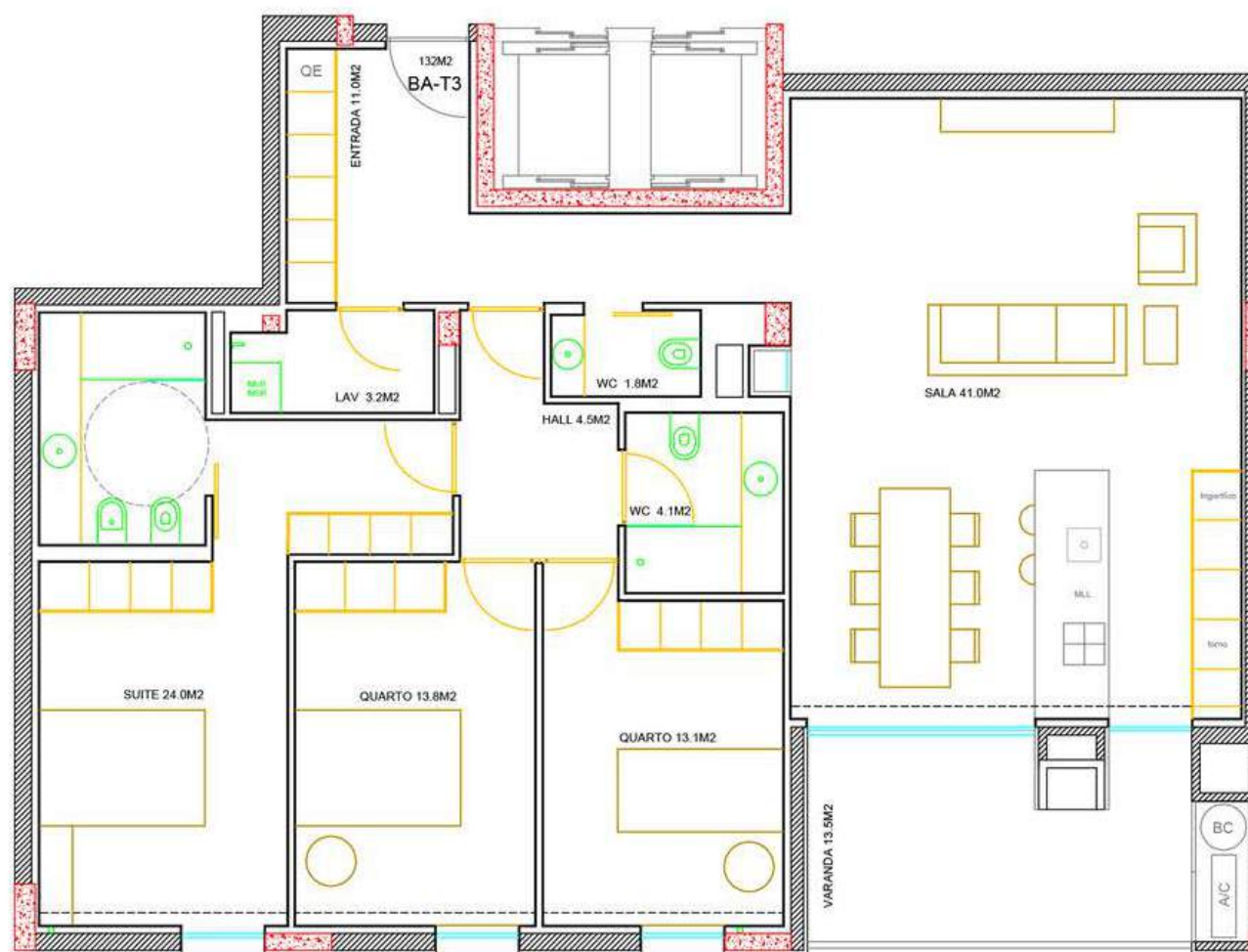
PLANTA piso 5

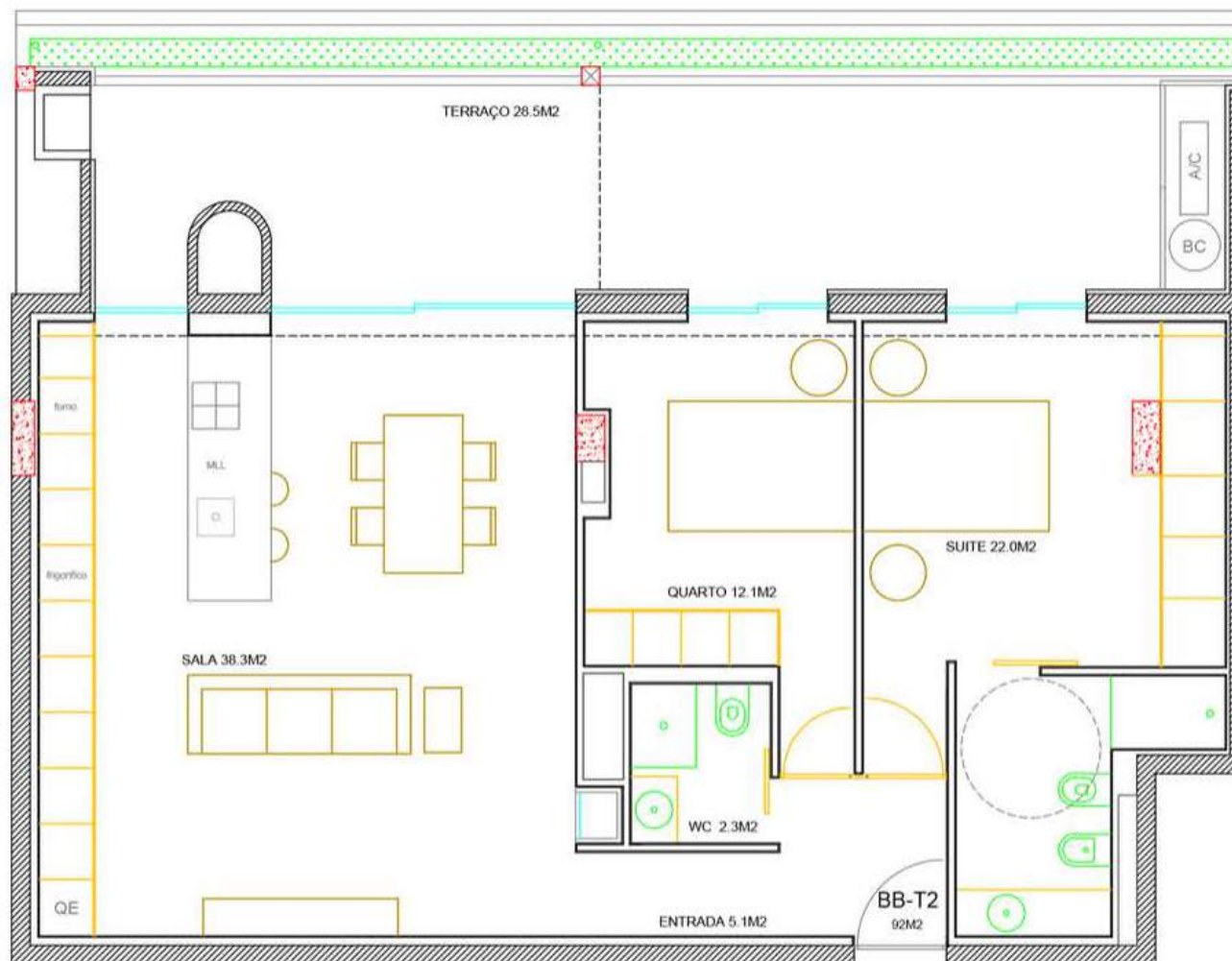


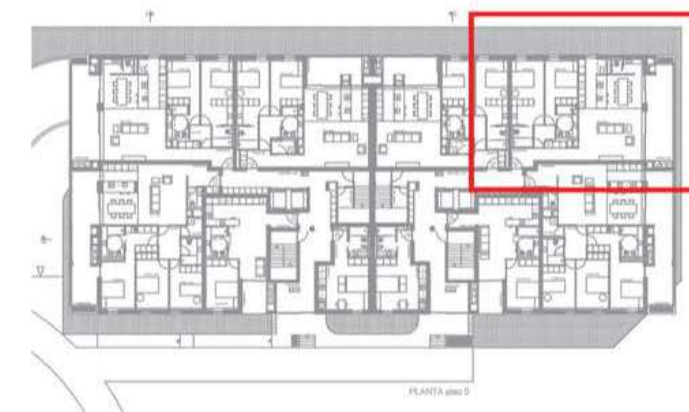
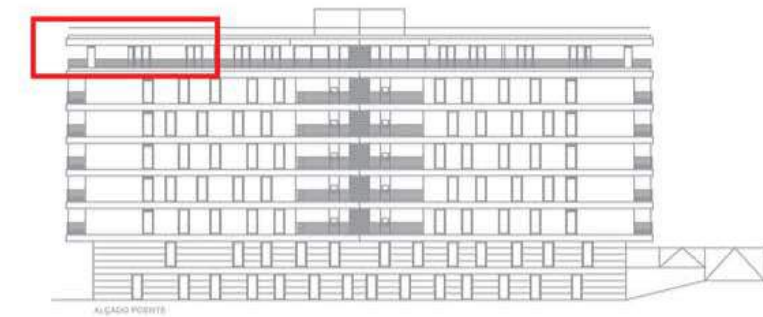
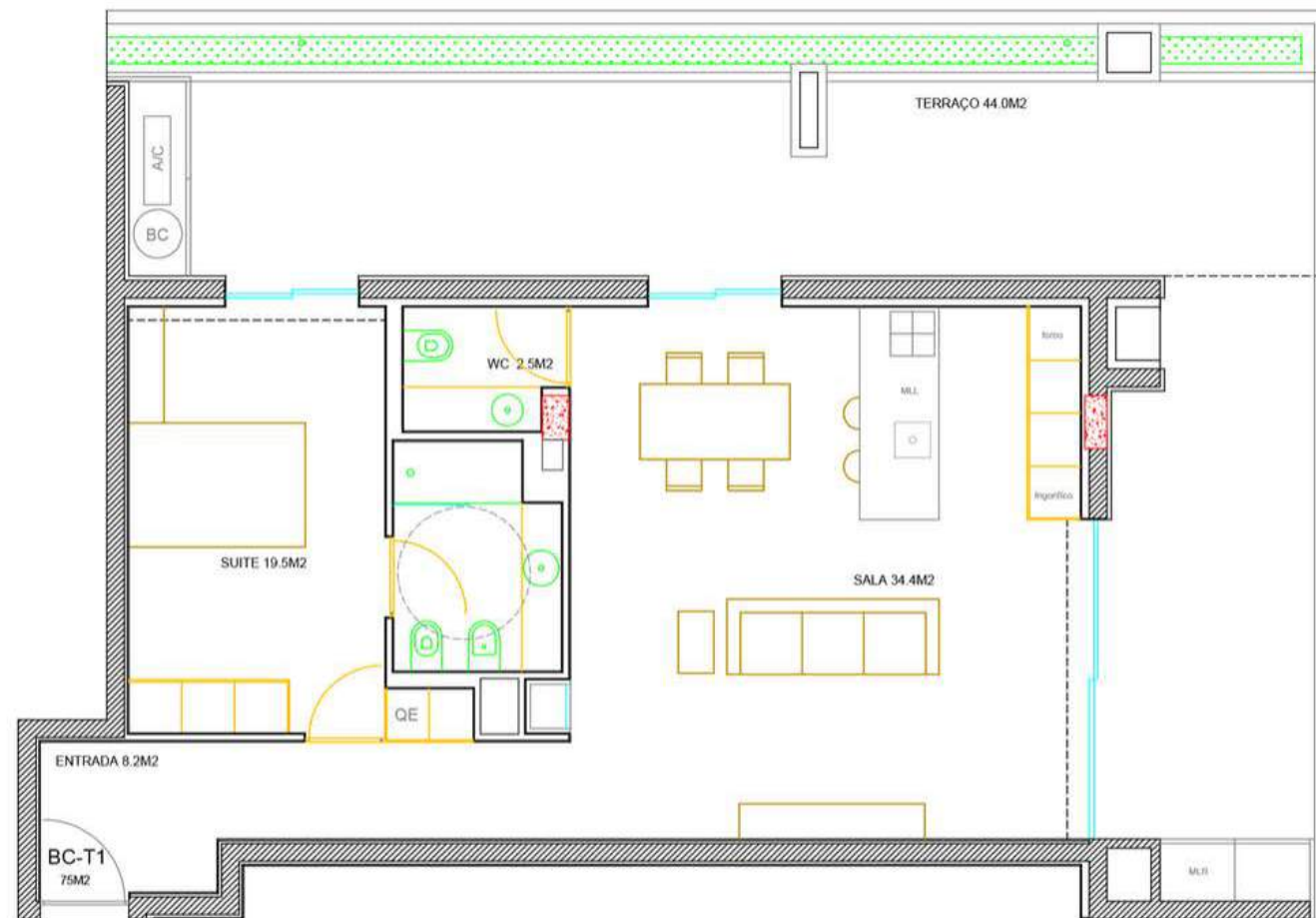


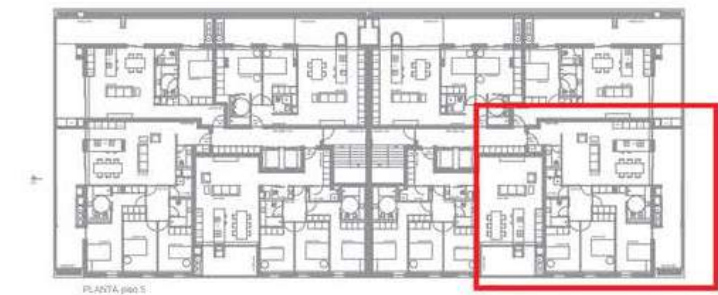
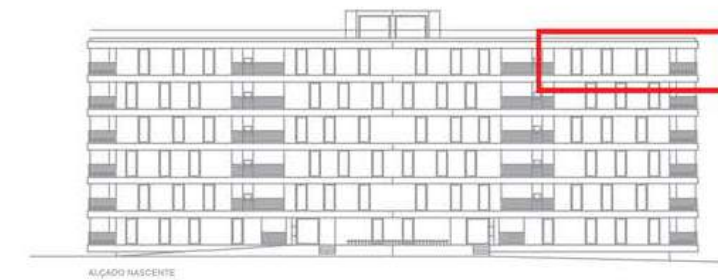












GARAGENS





PLANTA piso -1



PLANTA piso -2

MAPA DE ACABAMENTOS



MAPA DE ACABAMENTOS INTERIORES

Bloco C3 (Braga I Estádio S.C.Braga)



Mapa de acabamentos interiores C4

	PAVIMENTOS	PAREDES	TETOS	CARPINTARIAS	TAMPOS COZINHA	EQUIPAMENTOS SANITÁRIOS	MISTURADORAS	PROTECTORES SOLARES
Hall Entrada; Hall Quartos	Laminado flutuante AC4 Porcelanosa**	Gesso cartonado pintado à cor branco RAL 9016	Teto falso em gesso cartonado pintado à cor branco RAL 9016	Roupeiros com portas em termolaminado e interiores em melamina	_____	_____	_____	_____
Sala	Laminado flutuante AC4 Porcelanosa**	Gesso cartonado pintado à cor branco RAL 9016	Teto falso em gesso cartonado pintado à cor branco RAL 9016	_____	_____	_____	_____	_____
Quartos	Laminado flutuante AC4 Porcelanosa**	Gesso cartonado pintado à cor branco RAL 9016	Teto falso em gesso cartonado pintado à cor branco RAL 9016	Roupeiros com portas em termolaminado e interiores em melamina	_____	_____	_____	Rolo motorizado com tela blackout
Cozinha	Laminado flutuante AC4 Porcelanosa**	Gesso cartonado pintado à cor branco RAL 9016	Teto falso em gesso cartonado pintado à cor branco RAL 9016	Mobiliário com acabamento termolaminado e interiores em melamina; Puxadores embutidos lacados mate	Tampos de cozinha e laterais em HPL	_____	Porcelanosa**	_____
Lavandaria	Cerâmico Porcelanosa**	Gesso cartonado pintado à cor branco RAL 9016	Teto falso em gesso cartonado pintado à cor branco RAL 9016	_____	_____	_____	_____	_____
WC Serviço	Laminado flutuante AC4 Porcelanosa**	Cerâmico Porcelanosa** + gesso cartonado pintado à cor branco RAL 9016	Teto falso em gesso cartonado pintado à cor branco RAL 9016	Móvel em MDF hidrófugo lacado meio brilho	_____	Louça sanitária suspensa Porcelanosa**; Lavatório em KRION Porcelanosa**; Pulsadores de parede Porcelanosa**	Porcelanosa**	_____
WC Comum; WC Suite	Cerâmico Porcelanosa**	Cerâmico Porcelanosa** + gesso cartonado pintado à cor branco RAL 9016	Teto falso em gesso cartonado pintado à cor branco RAL 9016	Móvel em MDF hidrófugo lacado meio brilho	_____	Louça sanitária suspensa Porcelanosa**; Lavatórios em KRION Porcelanosa**; Pulsadores Porcelanosa**; Bases de duche em pavimento cerâmico, com resguardos em vidro a 2m altura.	Porcelanosa**	_____
Diversos	Portas de carpintaria pivotantes e de correr, com 2.40m de altura, revestidas a termolaminado, sem guarnições. Iluminação através de focos LED; sancas iluminadas. Recuperador de calor a ar e lenha com acabamento a ferro forjado e porta de abrir em vidro incolor. (Exceto fração 0.1 / 0.5 / 0.6 / 0.10) Climatização constituída por ar condicionado. Instalação de splits em todos os locais de permanências dos fogos (sala e quartos) Aquecimento de águas sanitárias através de sistema de bomba de calor. apartamentos equipados com sistema de videoporteiro.							
Hall Comum / Caixa de escadas	Elevador colectivo eléctrico							

* Para informações sobre as referências dos materiais deverá solicitar informação adicional à Acrescentar.



	REVESTIMENTO PAREDE	PAVIMENTO	REVESTIMENTOS (OUTROS)
FACHADA	Sistema ETICS com acabamentos VISOPLAST Revestimento cerâmico ao nível dos pisos -1 e -2.	_____	_____
RAMPAS DE ACESSO	_____	Mármore Valverde	_____
FLOREIRAS EXTERIORES	Betão Aparente e Cerâmico Porcelanosa**	_____	_____
ENTRADA	Mármore Valverde	Mármore Valverde	_____
GUARDAS	_____	_____	Perfis tubulares de aço pintado preto mate
PORTÃO GARAGEM	_____	_____	Portão seccionado em painel liso de alumínio preto mate
CAIXILHARIAS	_____	_____	Alumínio lacado a preto
VARANDAS	Sistema ETICS com acabamento VISOPLAST	Cerâmico	_____
ZONAS TÉCNICAS	Lâminas em Z em alumínio pintado preto	Cerâmico	Lâminas em Z em alumínio pintado preto
CHURRASQUEIRAS	Acabamento VISOPLAST	_____	Tijolo

* Para informações sobre as referências dos materiais deverá solicitar informação adicional à Acrescentar.